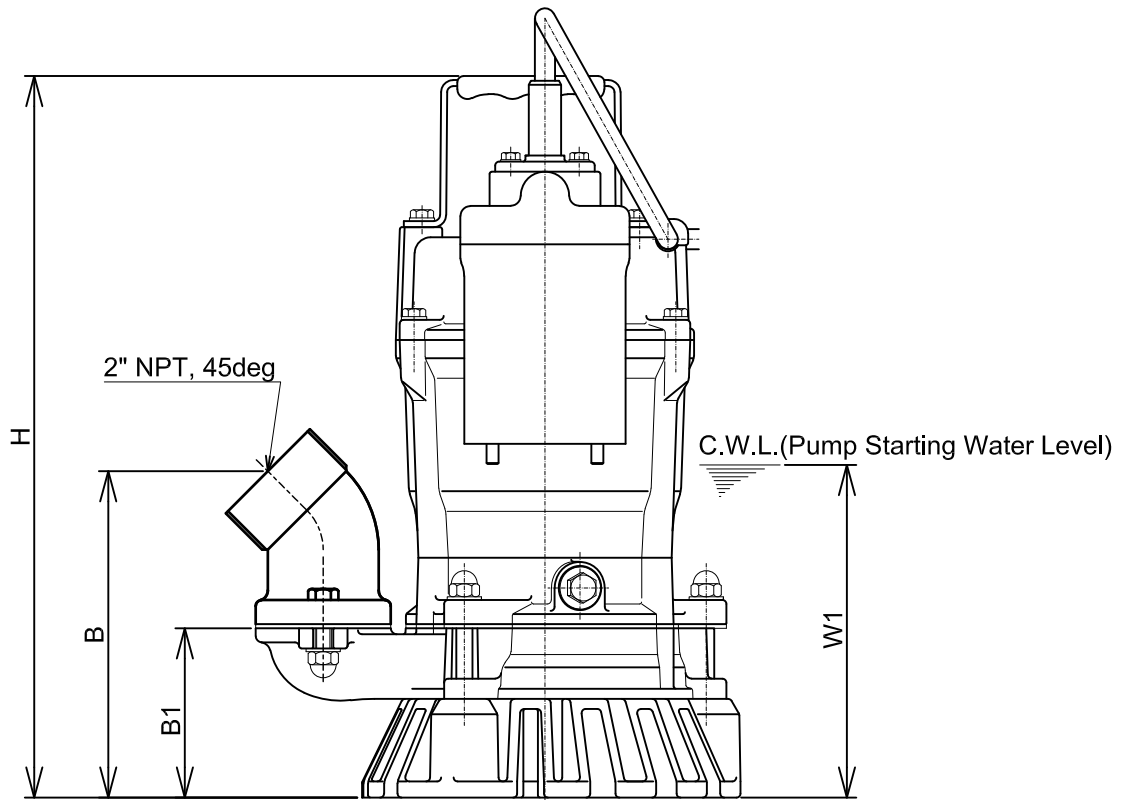
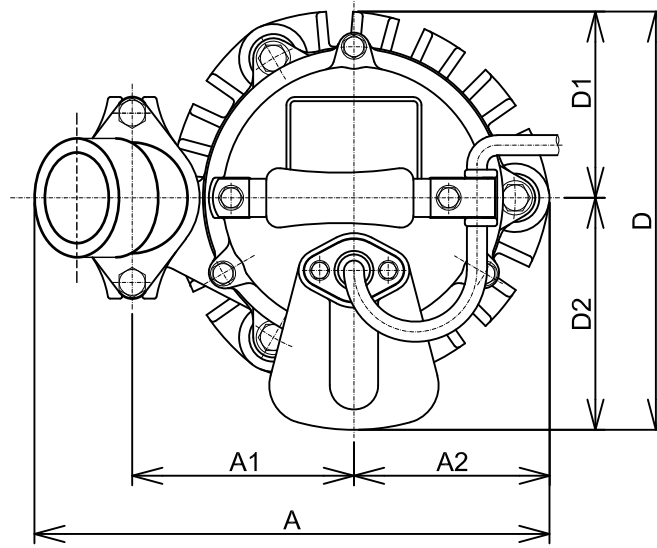


HSE2.4S-62



C.W.L. :Continuous running Water Level

DIMENSIONS:USCS (Inch)

Model	HP	NOM. SIZE	Pump & Motor										C.W.L.	*Wt.
			A	A1	A2	B	B1	D	D1	D2	H	W1	(lbs.)	
HSE2.4S-62	1/2	2"	10 1/16	4 5/16	3 13/16	6 3/8	3 5/16	8 1/8	3 5/8	4 1/2	14 1/8	6 1/2	26	

*Excluding Cable

DIMENSIONS:METRIC (mm)

Model	kW	NOM. SIZE	Pump & Motor										C.W.L.	*Wt.
			A	A1	A2	B	B1	D	D1	D2	H	W1	(kg)	
HSE2.4S-62	0.40	50	255	110	97	162	84	207	92	115	358	165	11.9	

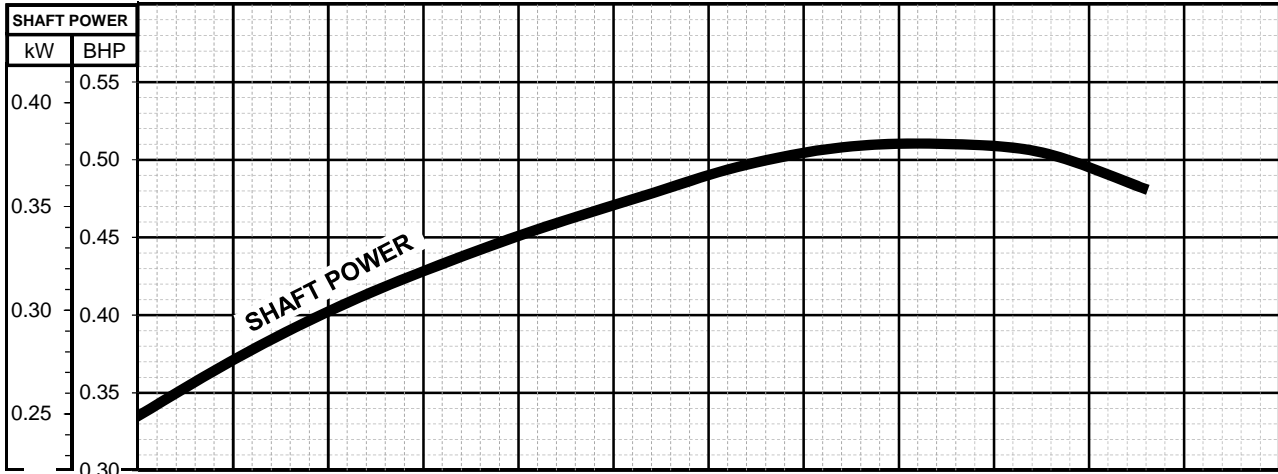
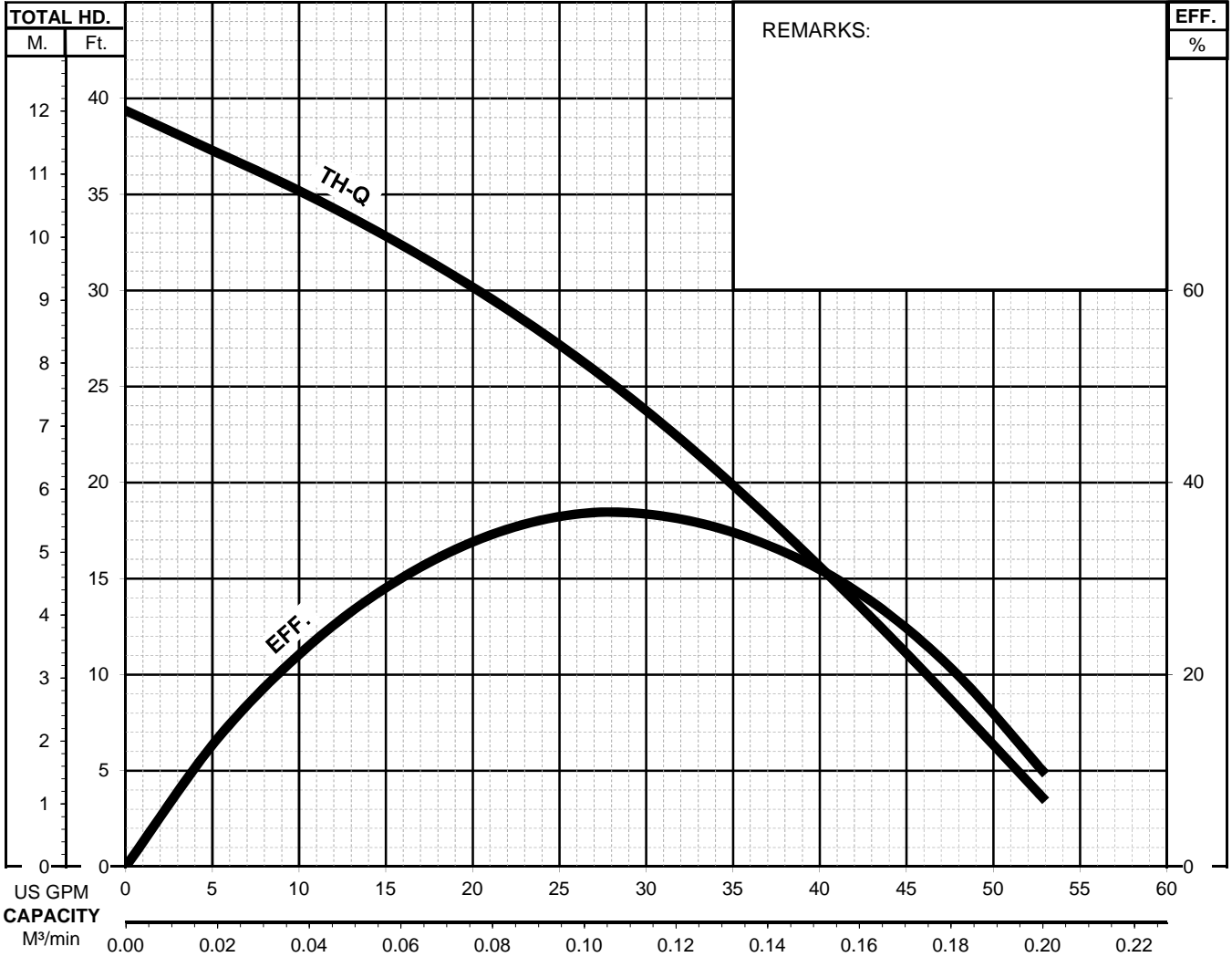


HSE - SERIES

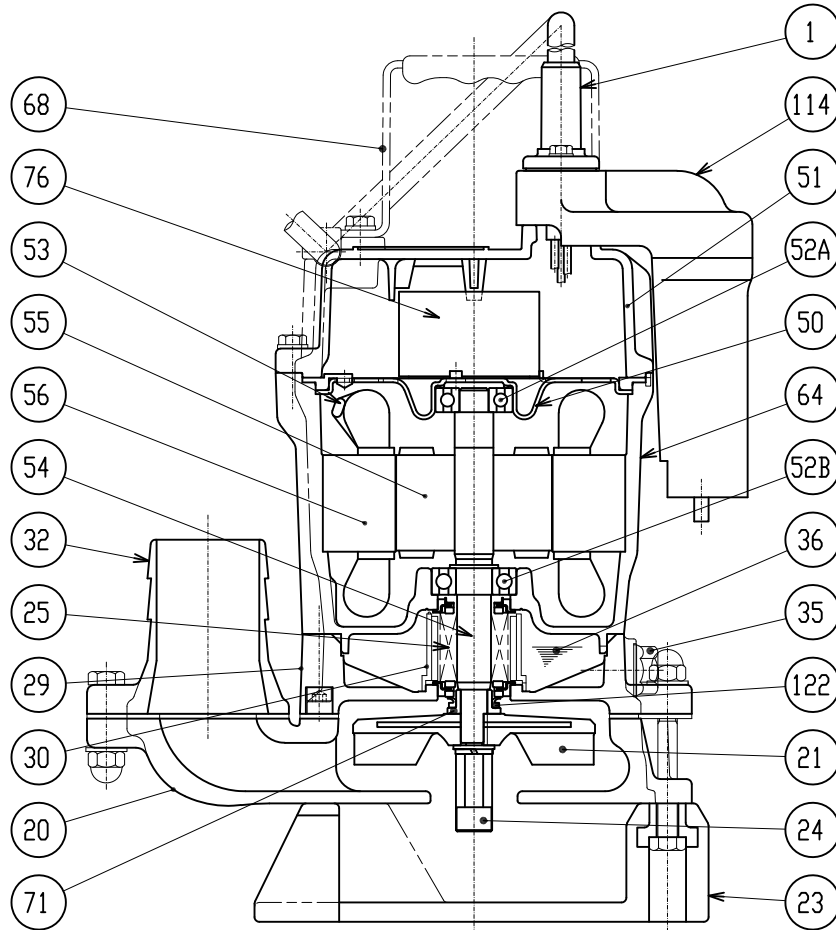
SEMI-VORTEX - WASTEWATER PUMPS (AUTO)

PERFORMANCE
CURVE

MODEL	BORE	HP	KW	RPM	SOLIDS DIA.	LIQUID	SG.	VISCOSITY	TEMP.
HSE2.4S-62	2"/50mm	0.54	0.4	3320	0.28"/7mm	Water	1.0	1.123cSt.	60°F
PUMP TYPE	PHASE	VOLTAGE	AMPERAGE	HZ	STARTING METHOD	INS. CLASS			
Semi-Vortex - Wastewater Pump	3	115 / 220	5.2 / 2.7	60	Capacitor Start	E			
CURVE No.	DATE	PHASE	VOLTAGE	AMPERAGE	HZ	STARTING METHOD	INS. CLASS		
-	-	-	-	-	-	-	-		



HSE2.4S-62



ITEM#	DESCRIPTION	MAIN MATERIAL / NOTE	RELATED ASTM, AISI CODE	RELATED EN CODE	Q'TY
1	Power Cable	PVC Sheath AWG16/3-20ft			1
20	Pump Casing	Ductile Cast Iron	A536 Grade 100-70-03	EN-GJS-700-2	1
21	Impeller	Urethane Rubber			1
23	Suction Strainer	PVC			1
24	Agitator	Steel	A283 Grade D	EN 10025 S275	1
25	Mechanical Seal	Silicon Carbide / W-14VL		EN 10025 S275	1
29	Oil Casing	Cast Iron	A48M Class30B	EN 1561 GJL-200	1
30	Oil Lifter	PBT Resin			1
32	Discharge Connection	Cast Iron / NPT 2"	A48M Class30B	EN 1561 GJL-200	1
35	Oil Plug	Stainless Steel	S 30400	1.4301	1
36	Lubricant	Turbine Oil ISO VG32 or SAE10W-20			
50	Motor Bracket	Steel (Electro-Galvanized)	A591	EN 10152	1
51	Motor Head Cover	Aluminum Alloy Die Casting	B85 383.0	EN 1706 AC-46100	1
52A	Upper Bearing	#6201ZC3			1
52B	Lower Bearing	#6202ZC3			1
53	Motor Protector				1
54	Shaft	Stainless Steel	S 40300	1.4000	1
55	Rotor				1
56	Stator				1
64	Motor Housing	Aluminum Alloy Die Casting	B85 383.0	EN 1706 AC-46100	1
68	Handle	Steel (Hot Rolled) + NR Rubber	A1011	EN 10111	1
71	Shaft Sleeve	Stainless Steel	S 30400	1.4301	1
76	Capacitor				1
114	Relay Unit	Styrene Butadien Rubber			1
122	V-Ring	Nitrile Butadiene Rubber			1

PARTS LIST		CONTRACTOR PUMP			9/12/2018	
ITEM	PART No.	DESCRIPTION	QTY	SIZE	MATERIAL	NOTES
1	001-944-11	Cabtyre Cable Set (20') 115V-60Hz (USA)	1	STOW3x1.25mm2(CSA)	LBD	
2	010-163-16	Cable Clip Rubber 110V-60Hz(USA)	1	HS2.4S	NBR	
3	140-446-12	Hex.Bolt (w/Plain Washer)	2	M5x38	SUS304	
4	003-190-10	Gland	1		SUS316	
5	114-000-91	Relay Unit	1	EL-2P-100		
6	140-032-37	Hex.Bolt	2	M6x15	SWRM	
7	068-259-19	Handle	1	HS3-4C, H=75	SPC+NR	
8	140-396-16	Hex.Bolt (w/Plain Washer)	3	M6x20	SUS304	
9	051-250-18	Motor Head Cover	1	Blue	ADC	
10	121-546-14	Packing	1	d120xd142x6.2t	NBR	
11	009-289-15	Lead Wire	1Set	AWG16x110L		
12	076-159-13	Capacitor	1	SH-CAP,33MF-270VAC(three terminals)		
13	009-001-16	Earth Terminal	1Set	UL1015-AWG18,G/Y,L=132		
14	143-086-35	Pan Screw (w/Spring Washer)	1	M4x8	C3604	
15	050-486-12	Motor Bracket	1		SECD	
16	142-192-16	Wave Washer	1	6201(D=32,t=0.4)	SK5	
17	052-100-15	Bearing	1	6201ZZC3		
18	055-889-14	Rotor	1Set	w/Bearing		
19	061-180-17	Bearing Collar	1	d15.1xd20x1.6t	SS	
20	052-101-16	Bearing	1	6202ZZC3		
21	056-C67-13	Stator 110V-60Hz (USA)	1Set	w/Miniature Protector		50Hz OK
	056-009-34	Stator 220V-60Hz (USA)	1Set	w/Miniature Protector		200-220V 50Hz is OK 230-240V is different stator
22	064-516-15	Motor Frame	1	Blue	ADC	
23	122-133-17	O-Ring	1	G-110(109.4xd3.1)	NBR	
24	025-291-10	Mechanical Seal	1	W-14VL	SSiC	
25	030-000-09	Oil Lifter	1	W-14VL	Resin	
26	141-005-34	Hex.Nut	3	M8	S35C	
27	142-127-10	Plain Washer	2	M8	SUS304	
28	029-000-58	Oil Casing	1	HS2.4(S)-52/62	FC	
29	121-246-11	Packing	1	d10.3xd16x2t	PE	
30	035-124-12	Oil Plug	1	M10x15	SUS304	
31	140-256-26	Hex.Socket Cap Bolt	3	M6x35	SCM	
32	122-441-11	V-Ring	1	VR-14	NBR	
33	121-000-20	Packing	1	HS-4E	NR	
34	071-292-14	Shaft Sleeve	1	LB3-250/480	SUS304	
35	021-007-44	Impeller (60Hz)	1	HS2.4S-62	Urethane Rubber	
	021-007-43	Impeller (50Hz) OPTION	1	50Hz	Urethane Rubber	
36	142-127-10	Plain Washer	1	M8	SUS304	

PARTS LIST		CONTRACTOR PUMP			9/12/2018	
ITEM	PART No.	DESCRIPTION	QTY	SIZE	MATERIAL	NOTES
37	142-163-34	Spring Washer	1	M8	SWRH	
38	024-174-13	Agitator	1	HS2.4(S)(M8)	Sintered Alloy	
39	140-057-38	Hex.Bolt	2	M8x35	SWRM	
40	032-289-17	Hose Coupling 2" angled	1	NPT-2(HS2-4)	FC	STANDARD
	032-214-11	Coupling 2" Straight	1	2" (straight)	ADC	OPTION
	048-180-16	Screwed Flange 2" female	1	NPT-2(P.C.84)	FC	OPTION
41	121-138-19	Packing	1	LB(P.C.84)	NBR	
	121-469-12	Packing for Flange	1	PC90xd58x2t	NR	use with 2" female flange OPTION
42	020-000-41	Pump Casing	1	SK2.4S	FC	
43	142-127-10	Plain Washer	2	M8	SUS304	
44	141-005-34	Hex.Nut	2	M8	S35C	
45	023-453-16	Strainer Stand	1	SK2.4S	PVC	
46	140-064-25	Hex.Bolt	3	M8x70	SWRM	
	173-550-12	Packing O-Ring Set	1Set	(Marked by *)		
10	121-546-14	Packing (Head Cover/M.Frame)	1	d120xd142x6.2t	NBR	
23	122-133-17	O-Ring (M.Frame/O.Casing)	1	G-110(109.4xd3.1)	NBR	
29	121-246-11	Packing (Oil Plug)	1	d10.3xd16x2t	PE	
33	121-000-20	Packing (O.Casing/P.Casing)	1	HS-4E	NR	
41	121-138-19	Packing (Hose Coupling)	1	LB(P.C.84)	NBR	
		Lubricant		Turbine Oil VG32 160ml		

PARTS LIST		CONTRACTOR PUMP				9/12/2018
ITEM	PART No.	DESCRIPTION	QTY	SIZE	MATERIAL	NOTES

EXPLODED VIEW

HSE2.4S-52/62

