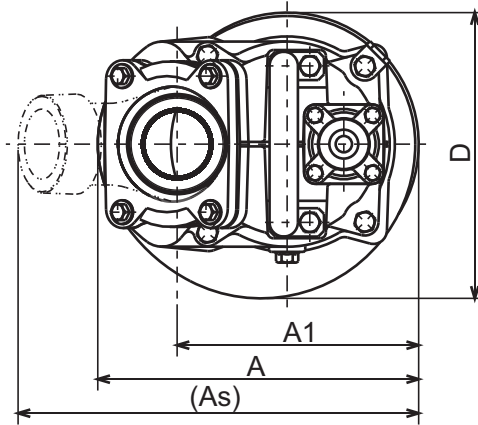


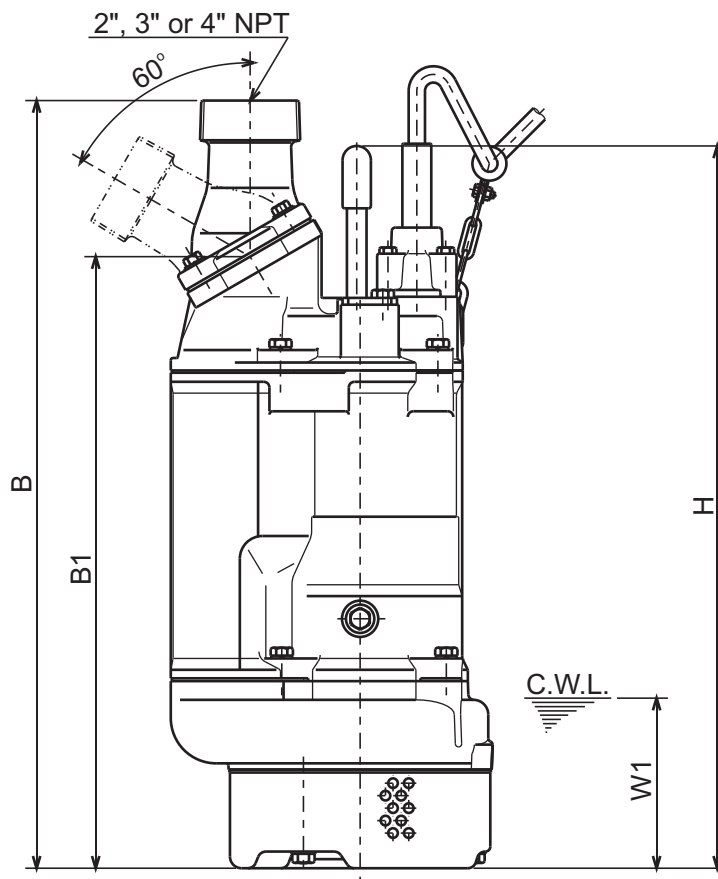


**KTZ - SERIES
DEWATERING PUMPS**

DIMENSIONS



**KTZ23.7-63
KTZ33.7-63
KTZ43.7-63**



C.W.L. : Continuous running Water Level

DIMENSIONS:USCS (Inch)

Model	HP	NOM. SIZE	Pump & Motor							C.W.L.	Wt.
			A	As	A1	B	B1	D	H	W1	(lbs.)
KTZ23.7-63	5	2"	11 1/8	13 5/16	8 3/8	26 1/4	21 1/4	9 15/16	25 1/16	5 7/8	137
KTZ33.7-63	5	3"	11 1/8	13 7/8	8 3/8	26 5/8	21 1/4	9 15/16	25 1/16	5 7/8	137
KTZ43.7-63	5	4"	11 1/8	14 1/2	8 3/8	27 1/16	21 1/4	9 15/16	25 1/16	5 7/8	137

DIMENSIONS:METRIC (mm)

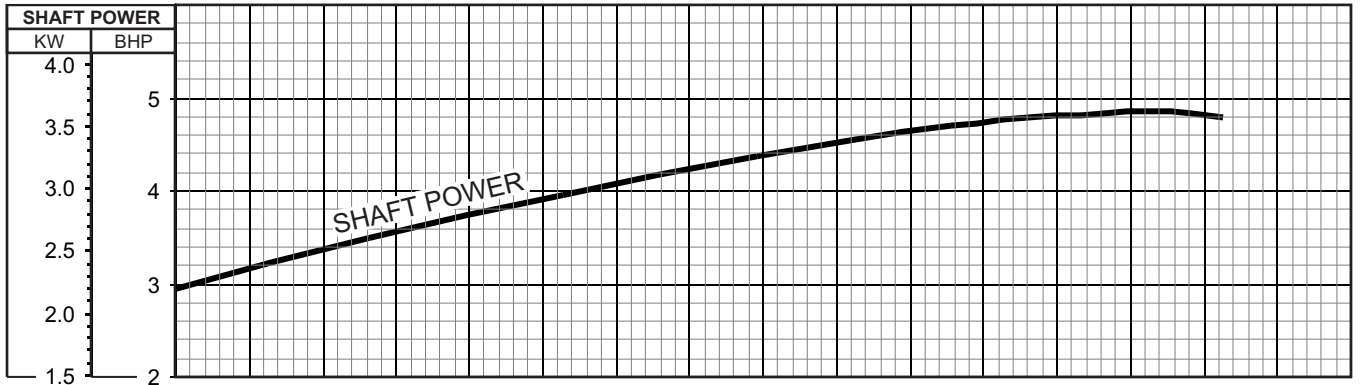
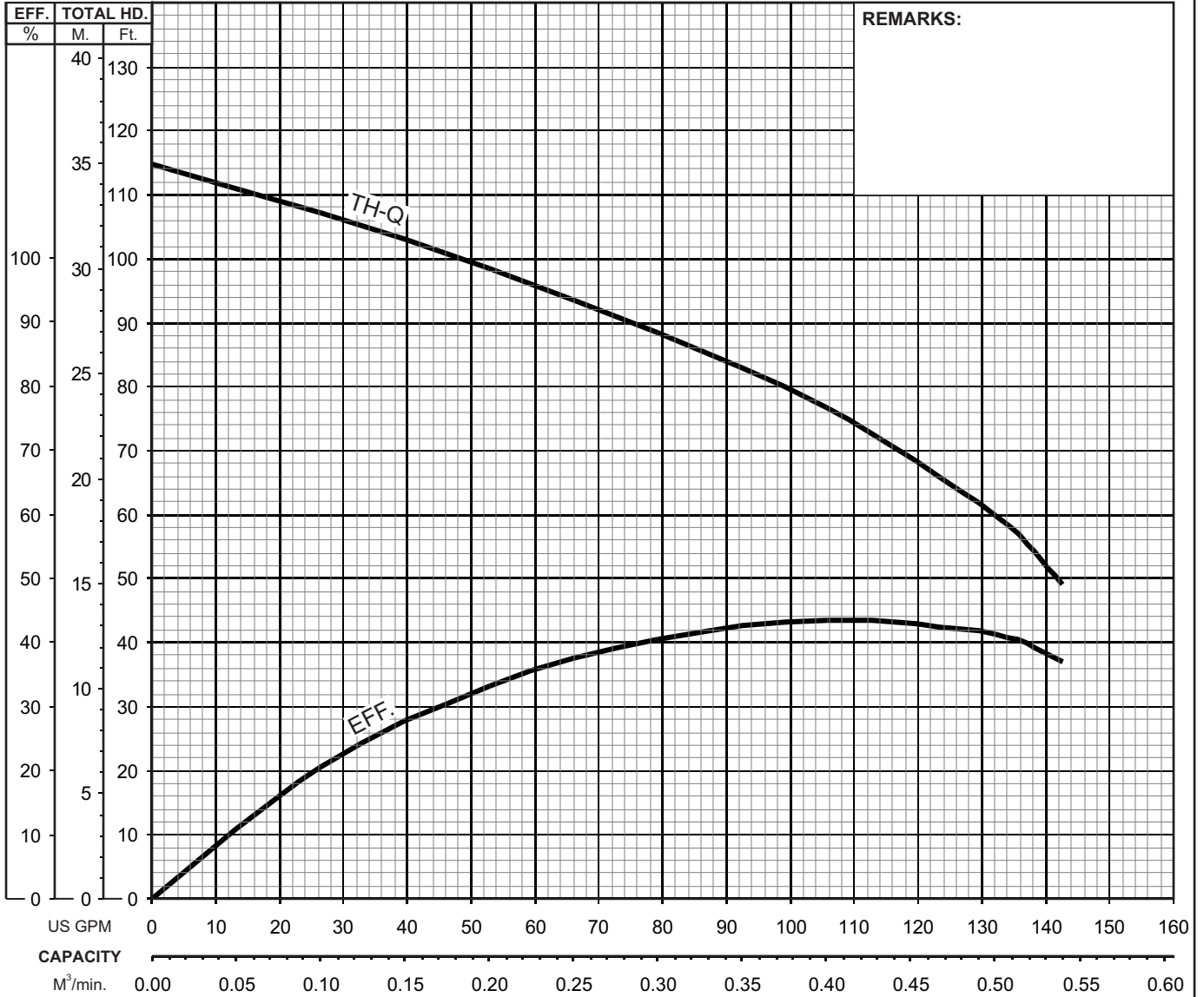
Model	kW	NOM. SIZE	Pump & Motor							C.W.L.	Wt.
			A	As	A1	B	B1	D	H	W1	(kg)
KTZ23.7-63	3.7	50	283	337	213	667	539	252	637	150	62
KTZ33.7-63	3.7	80	283	353	213	677	539	252	637	150	62
KTZ43.7-63	3.7	100	283	368	213	687	539	252	637	150	62



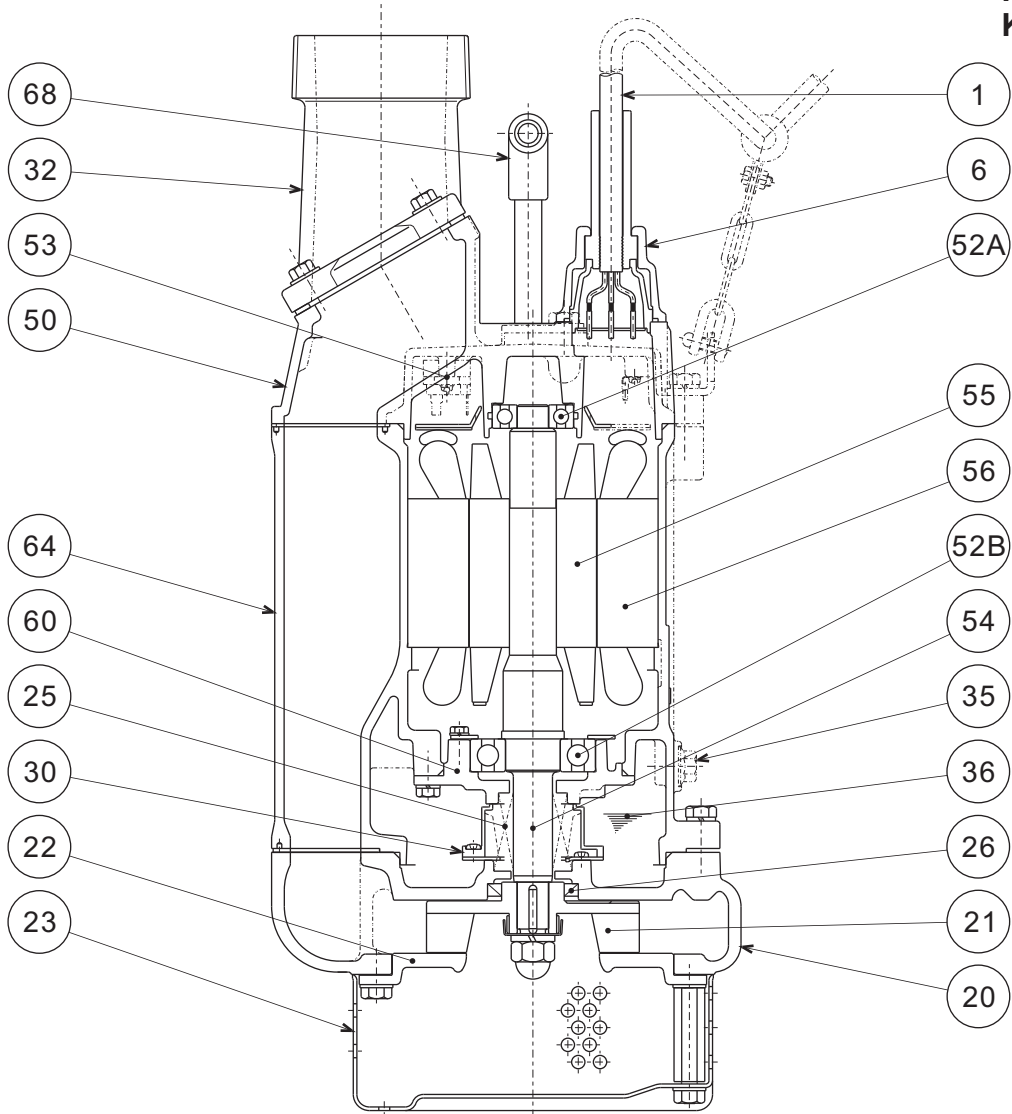
KTZ - SERIES DEWATERING PUMPS

PERFORMANCE CURVE

MODEL	BORE	HP	KW	RPM	SOLIDS DIA	LIQUID	SG.	VISCOSITY	TEMP.
KTZ23.7-63	2"/50mm	5	3.7	3410	0.334"/8.5mm	Water	1.0	1.123 cSt.	60°F
PUMP TYPE	PHASE	VOLTAGE	AMPERAGE	HZ	STARTING METHOD	INS. CLASS			
Dewatering Pump	3	208-230/460/575	15.0-13.6 / 6.8 / 5.3	60	Direct On Line	F			
CURVE No.	DATE	PHASE	VOLTAGE	AMPERAGE	HZ	STARTING METHOD	INS. CLASS		
-	-	-	-	-	-	-	-		



**KTZ23.7-63
KTZ33.7-63
KTZ43.7-63**



ITEM#	DESCRIPTION	MAIN MATERIAL / NOTE	RELATED ASTM, AISI CODE	RELATED EN CODE	Q'TY
1	Power Cable	Chloroprene Sheath AWG14/4-50ft			1
6	Stuffing Box	Cast Iron	A48M Class30B	EN 1561 GJL-200	1
20	Pump Casing	Cast Iron	A48M Class30B	EN 1561 GJL-200	1
21	Impeller	High Chrome Cast Iron	A532 Class III Type A	DIN 1695 G-X260Cr27	1
22	Suction Cover	Ductile Cast Iron	A536 80-55-06	EN 1563 GJS-500-7	1
23	Suction Strainer	Steel (Cold Rolled)	A109/A1008	EN 10130	1
25	Mechanical Seal	Silicon Carbide / H-25T			1
26	Oil Seal	Nitrile Butadiene Rubber / TC-40588			1
30	Oil Lifter	PBT Resin			1
32	Discharge Connection	Cast Iron / NPT 2", 3" or 4"	A48M Class30B	EN 1561 GJL-200	1
35	Oil Plug	Stainless Steel	S 30400	1.4301	1
36	Lubricant	Turbine Oil ISO VG32 or SAE10W-20			
50	Motor Head Cover	Cast Iron	A48M Class25B	EN 1561 GJL-150	1
52A	Upper Bearing	#6304ZZC3			1
52B	Lower Bearing	#6307ZZC3			1
53	Motor Protector				1
54	Shaft	Stainless Steel	S 42000	1.4028	1
55	Rotor				1
56	Stator				1
60	Bearing Housing	Cast Iron	A48M Class25B	EN 1561 GJL-150	1
64	Motor Housing	Cast Iron	A48M Class25B	EN 1561 GJL-150	1
68	Handle	Carbon Steel Pipe + NBR Rubber	A53 Type F	DIN 1615 St33	1

PARTS LIST		CONTRACTOR DEWATERING PUMPS			DATE: FEB. 2009	
ITEM	PARTS No.	DESCRIPTION	Q'TY	SIZE	MATERIAL	NOTES
1	001-840-32	Cable w/Stuffing Box 50'	1	KTZ, AWG14/4 x 50'	2PNCT.F	
2	010-124-15	Cable Clip Rubber	1	No.3	NBR	
3	010-120-18	Cable Clip	1	No.2-1	SPC	
4	141-004-59	Hex. Nut M6	1	M6	SWRM	
5	140-032-37	Hex. Bolt M6 x 15	1	M6x12	SWRM	
6	095-131-18	Chain	1	d4(3-Link)	SS	
7	011-110-11	Shackle	1	6mm	SS	
8	140-060-18	Hex.Bolt 8x50	4	M8x50	SUS304	
9	006-167-17	Stuff Box KTZ3.7/5.5/7.5,LH25.	1	No.1-3	FC	
10	122-121-12	O-Ring G-50/3.1	1	G-50	NBR	*
11	004-167-11	Cable Bush KTZ2(3)(4)3.7	1	No.1	CR	
12	008-156-19	Boot KTZ3.7/5.5/7.5	1	No.1-3	ADC	
13	009-126-13	Solderless Terminal	4	AWG16-14	Nylon	
14	002-135-14	Heat Shrink Tube KTZ2(3)(4)3.7	1	A(d15x0.3t)	\$/3.2ft	
15	140-079-10	Hex. Bolt 10x40	4	M10x40	SUS304	
16	142-164-19	Spring Washer M10	4	M10		
17	070-117-11	Fittings(Shape L)	1	KTZ 3.7-11kW	SPC	
18	140-074-15	Hex Bolt 10x20	2	M10x20	SUS304	
19	068-262-15	Handle KTZ23.7/45.5	1	KTZ23.7/45.5	SGP+SS	
20	140-076-59	Hex.Bolt 10x30 SUS410	4	M10x30	SUS410	
21	142-128-24	Plain Washer M10	4	M10		
22	032-159-17	Hose Coupling 2" NPT	1	NPT-2" (GH)	FC	Standard-KTZ23.7
22	032-161-12	Hose Coupling 3" NPT	1	NPT-3" (GH)	FC	Standard-KTZ33.7
22	032-162-13	Hose Coupling 4" NPT	1	NPT-4" (GH)	FC	Standard-KTZ43.7
23	121-141-15	Packing	1	KRB-3"/4"	NR	*
24	050-419-14	Mtr Bracket KTZ2(3)(4)3.7-60	1	KTZ23.7-50/60	FC	
25	122-276-13	O-Ring 160 x 3.1	1	160xd3.1	NBR	*
26	053-241-25	Mtr Protector KA313-GGXL110 (220V)	1	KA313-GGXL110 (T.C) (220V)		
26	053-000-02	Mtr Protector KA313-GDVL103 (440V)	1	KA313-GDVL103 (T.C) (440V)		
26	053-421-18	Motor Protector KA313-GQXL102 (575V)	1	KA313-GQXL102 (T.C) (575V)		
27	143-126-12	Screw	2	M4x12, w/ S.Washer & Washer	SWRM	
28	009-212-17	Earth Terminal Set	1	AWG14 x 130L		
29	143-085-34	Cross Pan Screw 4x6 BSBM	1	M4 x 6L	SWRM	
30	142-196-10	Wave Washer #6205/6304	1	#6205/6304	SK-5	
31	052-107-25	Bearing	1	6304ZZC3		
32	122-367-12	O-Ring 52x3.1	1	52xd3.1	NBR	*
33	058-000-04	L.Wire Prot. Plate	1	d66xD150x2t for #6304	PPS+GF30	
34	055-000-33	Rotor & Shaft KTZ2(3)(4)3.7-62	1	KTZ23.7-62		
35	147-026-13	Impeller Key 5x5x25 (JIS)	1	5x5x25L (JIS)	SUS420J2	
36	056-001-27	Stator 220V KTZ2(3)(4)3.7-62	1	KTZ23.7-62 (200-50, 200/220-62)		
36	056-001-29	Stator 380/400/440V-60HzKTZ23.7-52/62	1	Stator 380/400/440V-60HzKTZ23.7-52/62		
36	056-001-30	Stator 480V-60Hz KTZ2(3)(4)3.7-52/62	1	KTZ23.7-52/62 (440/460-50, 480-60)		
36	056-001-31	Stator 575V KTZ2(3)(4)3.7-62	1	KTZ23.7-52/62 (525-50, 575-60)		
37	121-506-12	Motor Frame Packing	1	KTZ23.7/33.7/43.7	NBR	*
38	064-000-19	Mtr Frame KTZ2(3)(4)3.7-62	1	KTZ23.7-52/62	FC	
39	140-078-19	Hex. Bolt 10x35	4	M10x35	SUS304	
40	142-164-19	Spring Washer M10	4	M10		
41	121-247-12	Packing 11.8x18x2t	1	d11.8xD18x2t	PE-sheet	*
42	140-000-17	Oil Plug M12x15	1	M12x15 (Flange Bolt, S=17)	SUS304	
43	140-030-35	Hex.Bolt 6x12 SWRM3	4	M6x12	SWRM	
44	142-162-33	Spring Washer M6	4	M6	SWRH	
45	062-219-19	Bearing Cover	1	d70xD105x2.3t	SPCC	

* Indicates items included in set



MODEL **KTZ(2)(3)(4)3.7-62**

PARTS LIST	CONTRACTOR DEWATERING PUMPS	DATE: FEB. 2009
-------------------	------------------------------------	------------------------

ITEM	PARTS No.	DESCRIPTION	Q'TY	SIZE	MATERIAL	NOTES
46	052-110-18	Bearing	1	6307ZZC3		
47	122-133-17	O-Ring G-110	1	G-110	NBR	*
48	060-411-17	Brg Housing KTZ2/3/43.7	1	KTZ23.7-50/60	FC	
50	140-054-48	Hex. Bolt 8x20 SWRM3	4	M8x20	SWRM	Includes ITEM# 49
51	025-000-01	Mech Seal HT-2530N	1	HT-2530N	SIC+SiC/CBN	
52	143-070-23	Cross Pan Screw (Scotch) 5x6	2	M5x6	SWRM	
53	030-139-15	Oil Lifter HT-2530	1	HT-2530	Resin	
54	143-070-10	Cross Head Screw 5x6	4	M5 x 6L	SWRM	
55	030-148-17	Fixing Plate HT-2530	1	HT-2530	SPCC	
56	122-283-13	O-Ring 165x3.1	1	165xd3.1	NBR	*
57	121-124-12	Pump Casing Packing	1	KTV-37/55	NBR	*
58	020-001-02	P. Casing (old #020-975-10)	1	KTZ23.7/33.7/43.7	FC	
59	026-144-49	Oil Seal (old #026-144-23)	1	DD-40588	NBR	
60	040-106-27	Impeller Shim	0	d20.2xD30x0.3t	SUS304	
61	021-L15-16	Impeller KTZ23.7	1	KTZ23.7-62Hz	HiCrFC	
61	021-L17-18	Impeller KTZ33.7	1	KTZ33.7-62Hz	HiCrFC	
61	021-563-30	Impeller KTZ43.7	1	KTZ43.7-62Hz	HiCrFC	
62	047-104-26	Impeller Thread Cover	1	No.3B (18)	SUS304	
63	142-166-11	Spring Washer M16	1	M16	SUS304	
64	141-033-15	Hex. Cap Nut M16	1	M16	SUS304	
65	120-109-21	Packing KTZ(2)(3)(4).7-60	0	d180xD222x0.3t	PE-sheet	
66	022-000-54	Suc Cover (old #022-750-13)	1	KTZ23.7	FCD	
66	022-000-55	Suc Cover (old #022-751-14)	1	KTZ33.7	FCD	
66	022-000-56	Suc Cover (old#022-752-15)	1	KTZ43.7	FCD	
67	142-128-24	Plain Washer M10	3	M10		
68	140-074-15	Hex Bolt 10x20	3	M10x20	SUS304	
69	142-128-24	Plain Washer M10	3	M10		
70	144-000-09	Stud Bolt 10x94	3	M10x94 (20/14)	SUS403	
71	023-471-10	Strainer Stand	1	KTZ(2)(3)(4)3.7	SPCC	
72	142-128-24	Plain Washer M10	3	M10		
73	141-006-77	Hex.Nut M10 S45C	3	M10	S45C	
>>>>> PACKING O-RING SET:						
	173-514-14	Packing O-ring Set KTZ(2)(3)(4)3.7	1	(*)		
10	122-121-12	O-Ring G-50/3.1	1	G-50	NBR	
23	121-141-15	Packing	1	KRB-3"/4"	NR	
25	122-276-13	O-Ring 160 x 3.1	1	160xd3.1	NBR	
32	122-367-12	O-Ring 52x3.1	1	52xd3.1	NBR	
37	121-506-12	Motor Frame Packing	1	KTZ23.7/33.7/43.7	NBR	
41	121-247-12	Packing 11.8x18x2t	1	d11.8xD18x2t	PE-sheet	
47	122-133-17	O-Ring G-110	1	G-110	NBR	
56	122-283-13	O-Ring 165x3.1	1	165xd3.1	NBR	
57	121-124-12	Pump Casing Packing	1	KTV-37/55	NBR	

>>>>> OPTIONAL:

61	021-L14-15	Impeller 50Hz KTZ23.7-52	1	KTZ23.7-50	HiCrFC	
61	021-L16-17	Impeller KTZ33.7.5-52	1	KTZ33.7-50	HiCrFC	
61	021-562-26	Impeller KTZ43.7-52	1	KTZ43.7-50	HiCrFC	
	183-008-11	Impeller Puller				
	Lubricant	Turbine Oil #32		960ML		SAE 10W-20

NOTE:
Pricing in U.S. currency and subject to change without notice.
Items with (*) indicate items are included in the set
No Electrical Components will be accepted as a return

