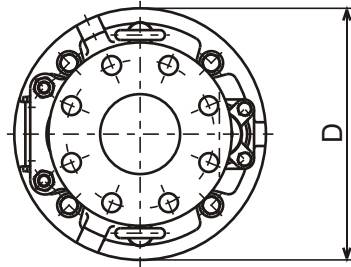




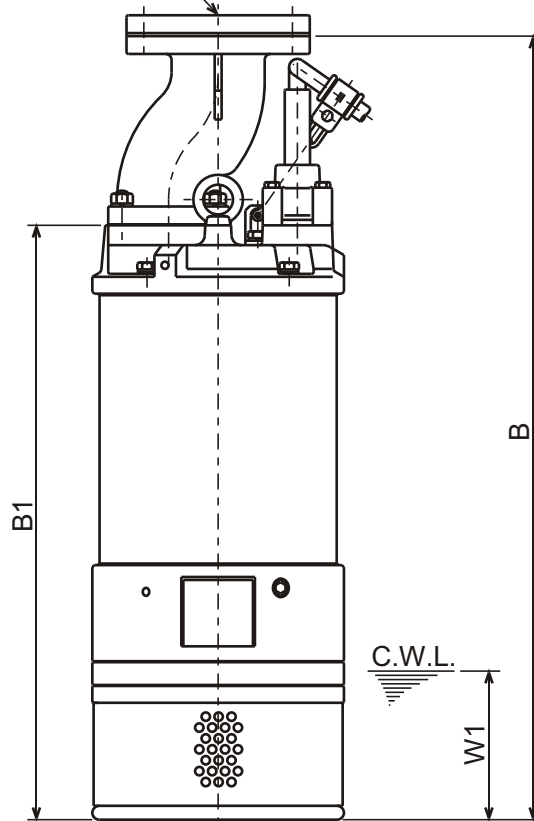
**LH - SERIES
DEWATERING PUMPS**

DIMENSIONS



**LH23.7-61
LH35.5-61**

2" or 3" JIS10K (150PSI) Flange
with
2" or 3" NPT Companion Flange



C.W.L. : Continuous running Water Level

DIMENSIONS:USCS (Inch)

Model	HP	NOM. SIZE	Pump & Motor			C.W.L.	Wt. (lbs.)
			B	B1	D	W1	
LH23.7-61	5	2"	31 1/8	23 5/8	10	5 7/8	192
LH35.5-61	7.5	3"	31 1/8	23 5/8	10	5 7/8	196

DIMENSIONS:METRIC (mm)

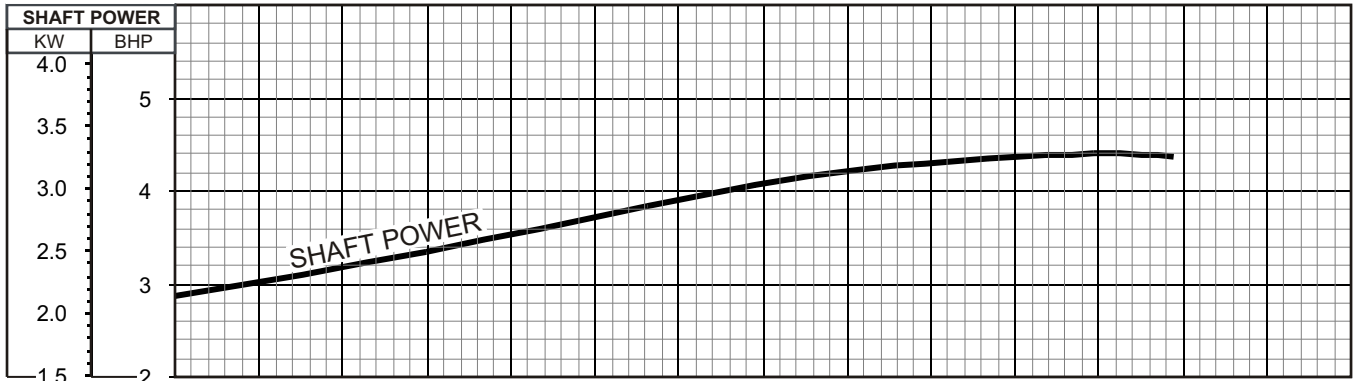
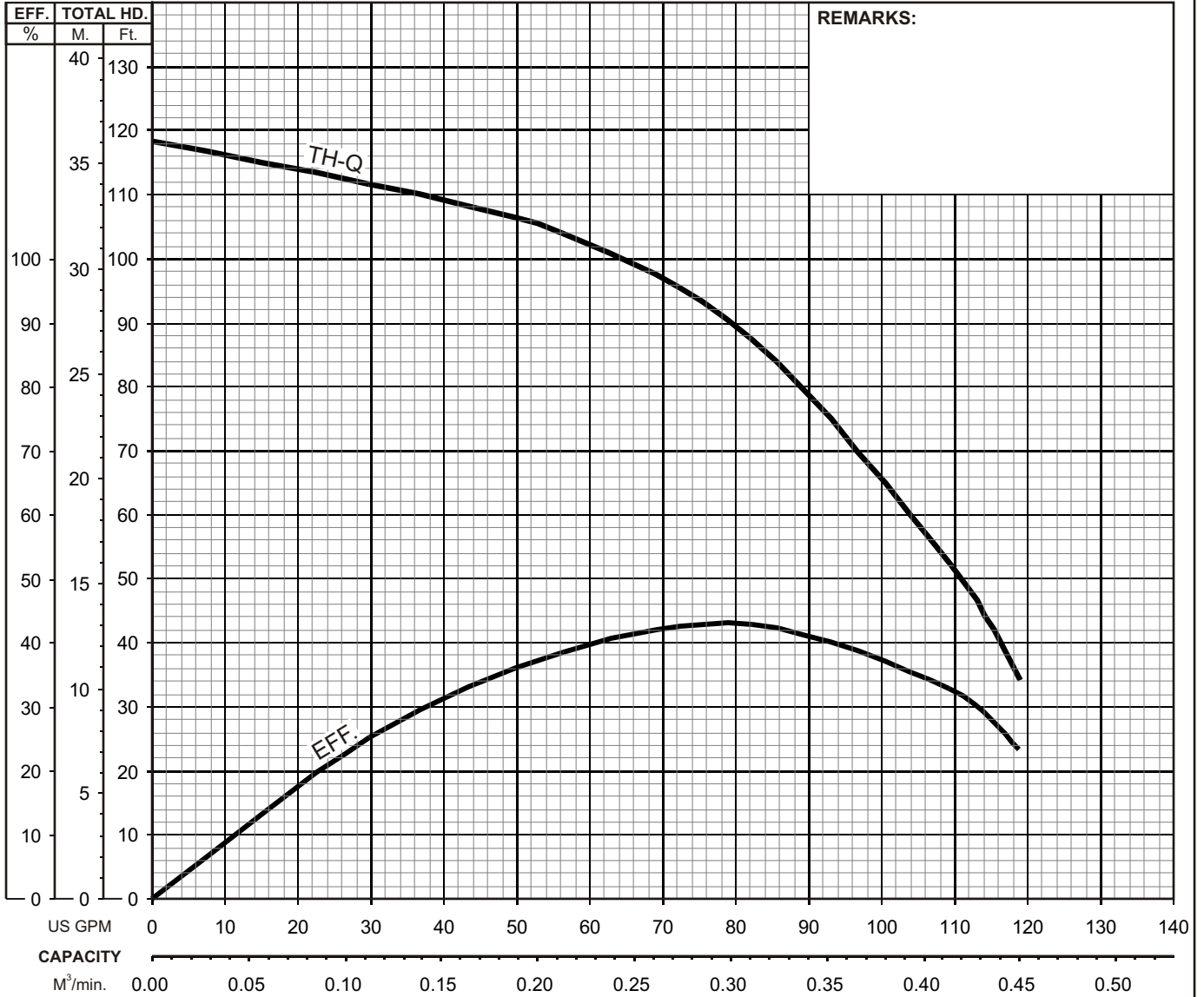
Model	kW	NOM. SIZE	Pump & Motor			C.W.L.	Wt. (kg)
			B	B1	D	W1	
LH23.7-61	3.7	50	791	600	254	150	87
LH35.5-61	5.5	80	791	600	254	150	89



LH - SERIES DEWATERING PUMPS

PERFORMANCE CURVE

MODEL	BORE	HP	KW	RPM	SOLIDS DIA	LIQUID	SG.	VISCOSITY	TEMP.
LH23.7-61	2"/50mm	5	3.7	3420	0.334"/8.5mm	Water	1.0	1.123 CST	60°F
PUMP TYPE		PHASE	VOLTAGE	AMPERAGE		HZ	STARTING METHOD		INS. CLASS
Dewatering Pump		3	220 / 440	14.6 / 7.3		60	Direct On Line		B
CURVE No.	DATE	PHASE	VOLTAGE	AMPERAGE		HZ	STARTING METHOD		INS. CLASS
-	-	-	-	-		-	-		-

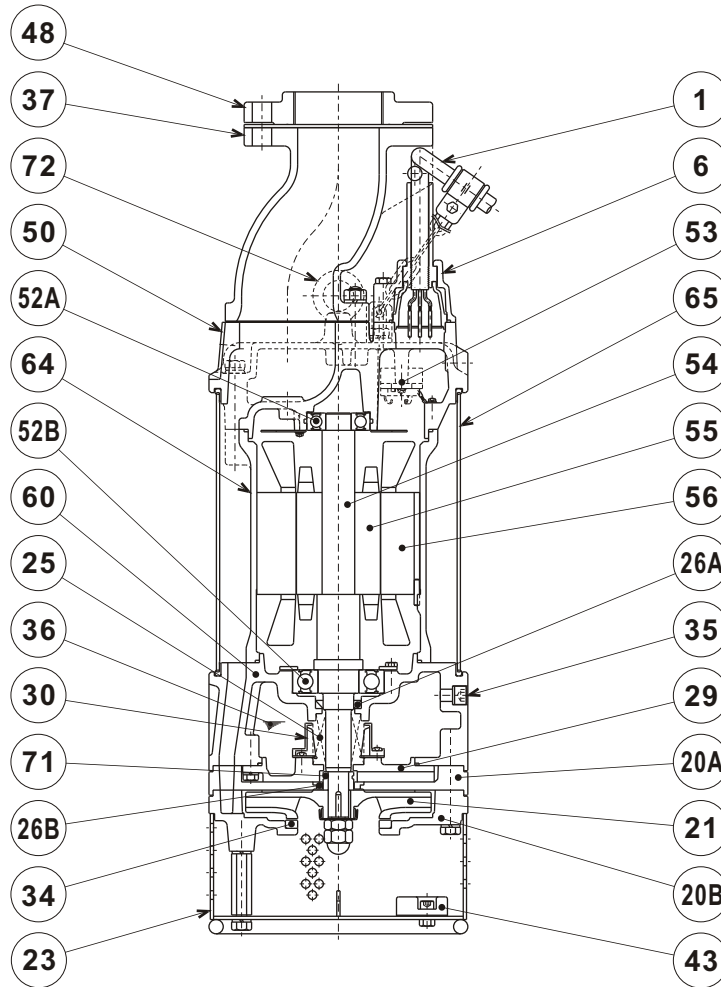




**LH - SERIES
DEWATERING PUMPS**

SECTIONAL VIEW

**LH23.7-61
LH35.5-61**



ITEM#	DESCRIPTION	MAIN MATERIAL / NOTE	ASTM, AISI CODE	RELATED EN CODE	Q'TY
1	Power Cable (LH23.7-61)	Chloroprene Sheath AWG14/4-50ft			1
	Power Cable (LH35.5-61)	Chloroprene Sheath AWG12/4-50ft			
6	Stuffing Box	Cast Iron	A48M Class30B	EN 1561 GJL-200	1
20A	Upper Pump Casing	Ductile Cast Iron	A536 65-45-12	EN 1563 GJS-450-10	1
20B	Lower Pump Casing	Ductile Cast Iron	A536 65-45-12	EN 1563 GJS-450-10	1
21	Impeller	High Chrome Cast Iron	A532 Class TypeA	DIN 1695 G-X260Cr27	1
23	Suction Strainer	Steel	A283 Grade D	EN 10025 S275	1
25	Mechanical Seal	Silicon Carbide / H-25T			1
26A	Oil Seal	NBR / SC30458			1
26B	Labyrinth Ring	Stainless Steel	S 30400	1.4301	1
29	Oil Casing	Cast Iron	A48M Class30B	EN 1561 GJL-200	1
30	Oil Lifter	PBT Resin W/GF40			1
34	Mouth Ring	High Chrome Cast Iron	A532 Class TypeA	DIN 1695 G-X260Cr27	1
35	Oil Plug	Stainless Steel	S 30400	1.4301	1
36	Lubricant	Turbine Oil ISO VG32 or SAE 10W-20			
37	Discharge Pipe	Ductile Cast Iron / 2" or 3" JIS10K	A536 65-45-12	EN 1563 GJS-450-10	1
43	Cathodic Protection Plate	Zinc Anode			4
48	Companion Flange	Cast Iron / NPT2" or 3" JIS10K	A48M Class30B	EN 1561 GJL-200	1
50	Motor Bracket	Cast Iron	A48M Class30B	EN 1561 GJL-200	1
52A	Upper Bearing	#6305ZZC3			1
52B	Lower Bearing	#6308ZZC3			1
53	Motor Protector				1
54	Shaft	Stainless Steel	S 42000	1.4028	1
55	Rotor				1
56	Stator				1
60	Bearing Housing	Cast Iron	A48M Class30B	EN 1561 GJL-200	1
64	Motor Housing	Cast Iron	A48M Class30B	EN 1561 GJL-200	1
65	Outer Cover	Steel	A283 Grade D	EN 10025 S275	1
71	Shaft Sleeve	Stainless Steel	S 40300	1.4000	1
72	Lifting Lug Bolt	Stainless Steel	S 30400	1.4301	2

PARTS LIST		CONTRACTOR PUMPS			8/20/2012	
ITEM	PART No.	DESCRIPTION	QTY	SIZE	MATERIAL	NOTES
1	001-840-32	Cabtyre Cable Set (15m)220V-60Hz(USA)	1	2PNCTF4Cx2mm2	KTZ	
1	001-840-32	Cabtyre Cable Set (15m)440V-60Hz(USA)	1	2PNCTF4Cx2mm2	KTZ	
2	010-124-15	Cable Clip Rubber	1	No.3	NBR	
3	010-120-18	Cable Clip	1	No.2-1	SPC	
4	141-004-59	Hex.Nut	1	M6	SWRM	
5	140-032-37	Hex.Bolt	1	M6x15	SWRM	
6	095-131-18	Chain	1	4mm(3L)	SS	
7	011-110-11	Shackle	1	6mm(M8,SC)	SS	
8	140-060-18	Hex.Bolt	4	M8x50	SUS304	
9	006-167-17	Stuffing Box	1	No.1-3	FC	
10	122-121-12	O-Ring	1	G-50(49.4xd3.1)	NBR	
11	004-167-11	Cable Bush	1	No.1	CR	
12	008-156-19	Mould Cover	1	No.1-3	ADC	
13	009-126-13	Terminal	4	1.25mm2/2mm2	Nylon	
14	002-135-14	Heat Shrink Tube (Sold per meter)	m	A(d15x0.3t)	(Vm)	
15	037-425-12	Center-Flange Discharge Pipe	1	LH23.7-51/61	FCD	
16	141-007-10	Hex.Nut	4	M12	SUS304	
17	142-165-10	Spring Washer	4	M12	SUS304	
18	121-373-18	Packing	1	P.C.133xd100x1t	THREE SHEET	
19	144-000-46	Stud Bolt	4	M12x64(24/27)	SUS304	
20	140-074-15	Hex.Bolt	2	M10x20	SUS304	
21	142-164-19	Spring Washer	1	M10	SUS304	
22	070-103-10	L-Shape Fitting	1	KT-55	SPC	
23	143-086-22	Pan Screw (w/Spring Washer)	1	M4x8	SWRM	
24	009-163-12	Earth Terminal	1Set	2mm2x190L		
25	140-087-11	Hex.Bolt	4	M10x80	SUS304	
26	142-164-19	Spring Washer	4	M10	SUS304	
27	142-297-12	Seal Washer	4	SM-10	SUS+NBR	
28	072-102-22	Eye Bolt	2	M12	SUS304	
29	144-583-14	Hex. Socket Cap Screw	4	M8x10	SUS304	
30	050-492-11	Motor Bracket	1		FC	
31	122-146-13	O-Ring	1	G-175(174.3xd5.7)	NBR	
32	121-591-14	Packing	1	LH23.7/35.5(L)	NBR	
33		Motor Protector 220V-60Hz(USA)	1			
33		Motor Protector 440V-60Hz(USA)	1			
34	143-016-18	Pan Screw	2	M4x12	SWRM	
35	058-202-16	Lead Wire Protection Plate	1	d63xd140x1.2t	SPCC	
36	140-002-25	Hex.Bolt	2	M4x8	SWRM	
37	122-244-12	O-Ring	1	61.4xd3.1	NBR	
38	142-197-11	Wave Washer	1	6305	SK5	
39	052-108-13	Bearing	1	6305ZZC3		
40	065-384-15	Outer Cover	1		SS	
41	121-591-14	Packing	1	LH23.7/35.5(L)	NBR	
42		Stator 220V-60Hz(USA)	1Set			

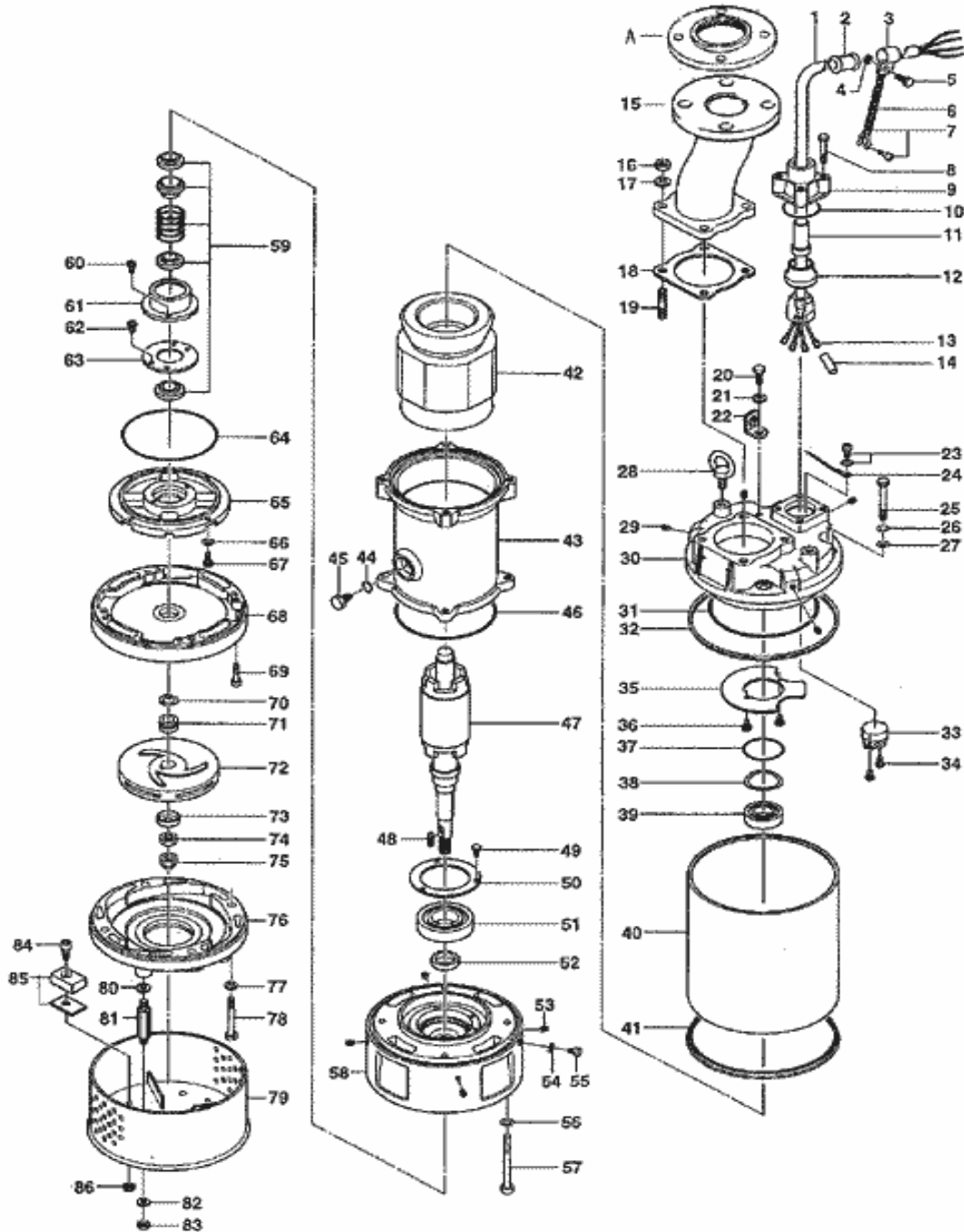
PARTS LIST		CONTRACTOR PUMPS			8/20/2012	
ITEM	PART No.	DESCRIPTION	QTY	SIZE	MATERIAL	NOTES
42		Stator 440V-60Hz(USA)	1Set			
43	064-569-13	Motor Frame	1		FC	
44	122-259-10	O-Ring	1	12xd3	NBR	
45	144-490-13	Stator Set Bolt	1	M12(B=21)	SUS403	
46	122-141-18	O-Ring	1	G-150(149.3xd5.7)	NBR	
47	055-882-17	Rotor	1Set			
48	147-073-15	Impeller Key	1	5x5x22l	SUS420	
49	140-033-25	Hex.Bolt	3	M6x16	SWRM	
50	062-194-17	Bearing Fixing Plate	1	d82xd116x4.5t	SS	
51	052-111-19	Bearing	1	6308ZZC3		
52	026-171-32	Oil Seal	1	SC-30458	NBR	
53	144-583-14	Hex. Socket Cap Screw	4	M8x10	SUS304	
54	121-247-12	Packing	1	d12.3xd18x2t	PE	
55	035-113-18	Oil Plug	1	M12x14	SUS304	
56	142-164-19	Spring Washer	4	M10	SUS304	
57	140-515-13	Hex.Socket Cap Bolt	4	M10x110	SUS304	
58	060-492-12	Bearing Housing	1		FC	
59	025-255-12	Mechanical Seal	1	H-25T	SiC	
60	143-070-23	Pan Screw	2	M5x6	SWRM	
61	030-143-12	Oil Lifter	1	H-25(A)(T)	Resin	
62	143-070-10	Pan Screw	2	M5x6	SWRM	
63	030-152-14	Seal Stopper	1	H-25(A)(T)	SPCC	
64	122-328-11	O-Ring	1	150xd3.1	NBR	
65	029-396-18	Oil Casing	1	LH23.7/35.5-51/61	FC	
66	142-163-18	Spring Washer	4	M8	SUS304	
67	140-055-10	Hex.Bolt	4	M8x25	SUS304	
68	020-000-27	Upper Pump Casing (w/Labyrinth Ring)	1	LH23.7/35.5-51/61	FC	
69	140-270-13	Hex.Socket Cap Bolt	4	M8x30	SUS304	
70	040-106-27	Impeller Shim		d20.2xd30x0.3t	SUS304	
71	071-000-04	Shaft Sleeve	1	LH23.7/35.5-51/61	SUS403	
72	021R1016	Impeller (60Hz)	1	LH23.7-61	HiCrFC	
73	047-104-26	Impeller Thread Protect.Cover	1	No.3B(18)	SUS304	
74	141-008-40	Hex.Nut	1	M16(H=10)	SUS304	
75	141-033-15	Hex.Cap Nut	1	M16	SUS304	
76	020-000-28	Lower Pump Casing (w/Mouth Ring)	1	LH23.7-51/61	FC	
77	142-164-19	Spring Washer	4	M10	SUS304	
78	140-087-11	Hex.Bolt	4	M10x80	SUS304	
79	023-001-27	Strainer Stand	1	LH23.7/35.5-51/61	SS	interchangable with OLD part# 023-542-13
80	142-164-19	Spring Washer	4	M10	SUS304	
81	144-000-09	Stud Bolt	4	M10x94(20/14)	SUS403	
82	142-164-19	Spring Washer	4	M10	SUS304	
83	141-006-19	Hex.Nut	4	M10	SUS304	
84	140-268-18	Hex.Socket Cap Bolt	4	M8x20	SUS304	
85	043-100-17	Cathodic Protection Plate	4	DW(50x34x20t)	ZNP	

PARTS LIST		CONTRACTOR PUMPS				8/20/2012
ITEM	PART No.	DESCRIPTION	QTY	SIZE	MATERIAL	NOTES
86	141-005-18	Hex.Nut	4	M8	SUS304	
A	048-196-15	Screwed Flange	1	NPT-2(JIS10K)	FC	
		<Packing O-Ring Set>				
	173-000-18	Packing O-Ring Set	1Set	(Marked by *)		
10	122-121-12	O-Ring	1	G-50(49.4xd3.1)	NBR	
18	121-373-18	Packing	1	P.C.133xd100x1t	THREE SHEET	
27	142-297-12	Seal Washer (M.Bracket bolt)	4	SM-10	SUS+NBR	
31	122-146-13	O-Ring	1	G-175(174.3xd5.7)	NBR	
32	121-591-14	Packing	1	LH23.7/35.5(L)	NBR	
37	122-244-12	O-Ring (Upp. Bearing)	1	61.4xd3.1	NBR	
41	121-591-14	Packing	1	LH23.7/35.5(L)	NBR	
44	122-259-10	O-Ring	1	12xd3	NBR	
46	122-141-18	O-Ring	1	G-150(149.3xd5.7)	NBR	
54	121-247-12	Packing	1	d12.3xd18x2t	PE	
64	122-328-11	O-Ring	1	150xd3.1	NBR	
		Lubricant		Turbine Oil VG32 1,650ml		

PARTS LIST		CONTRACTOR PUMPS				8/20/2012
ITEM	PART No.	DESCRIPTION	QTY	SIZE	MATERIAL	NOTES

EXPLODED VIEW

LH23.7-51/61



C-00455-1