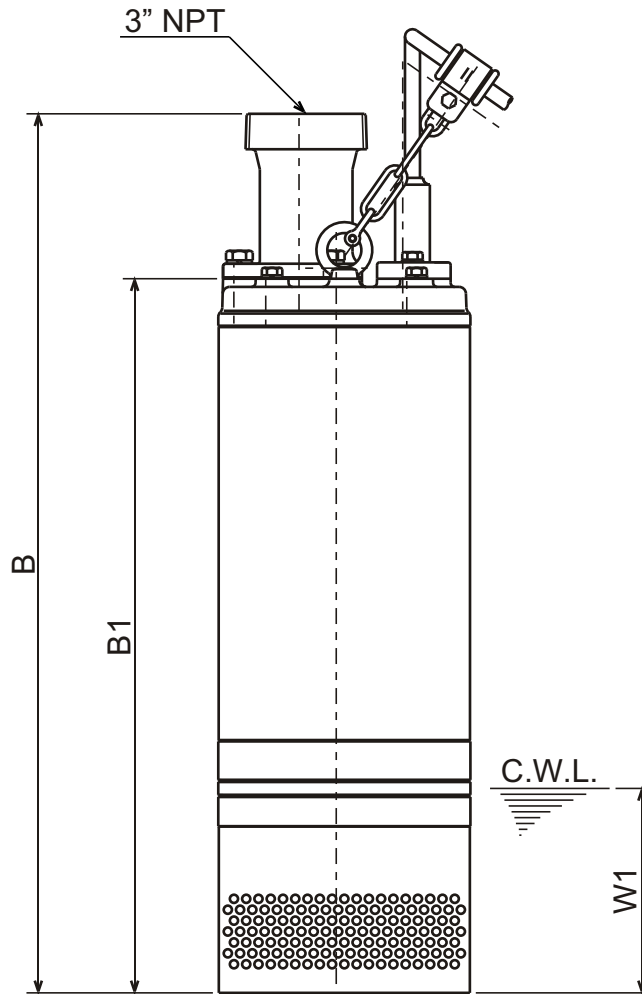
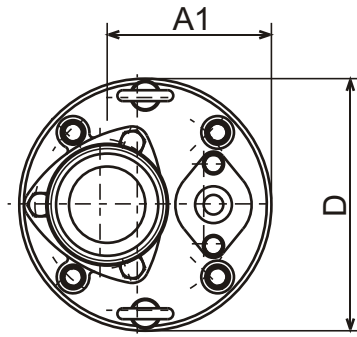




**LH - SERIES  
DEWATERING PUMPS**

**DIMENSIONS**

**LH33.0-60**



C.W.L. : Continuous running Water Level

**DIMENSIONS:USCS (Inch)**

Model	HP	NOM. SIZE					C.W.L.	Wt. (lbs.)
			A1	B	B1	D	W1	
LH33.0-60	4	3"	4 3/4	25 3/8	20 5/8	7 5/16	5 7/8	93

**DIMENSIONS:METRIC (mm)**

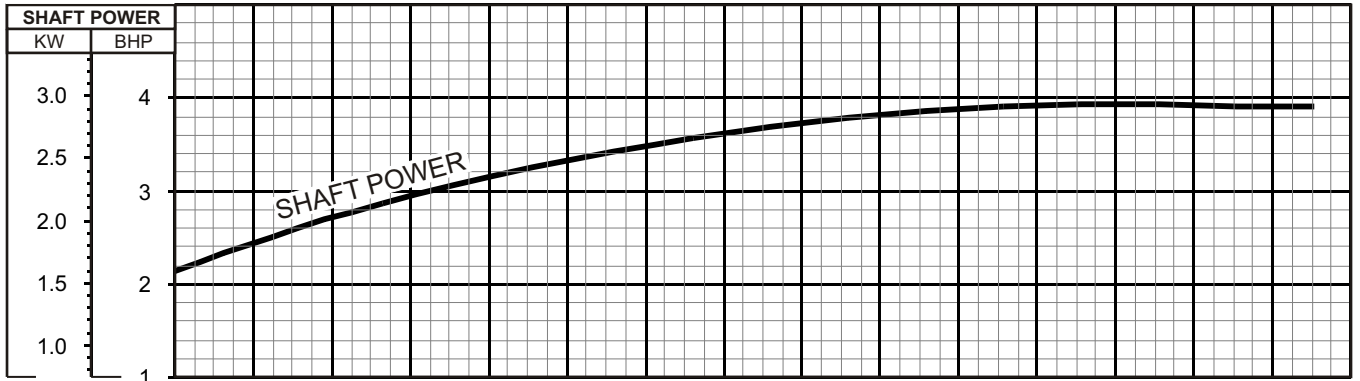
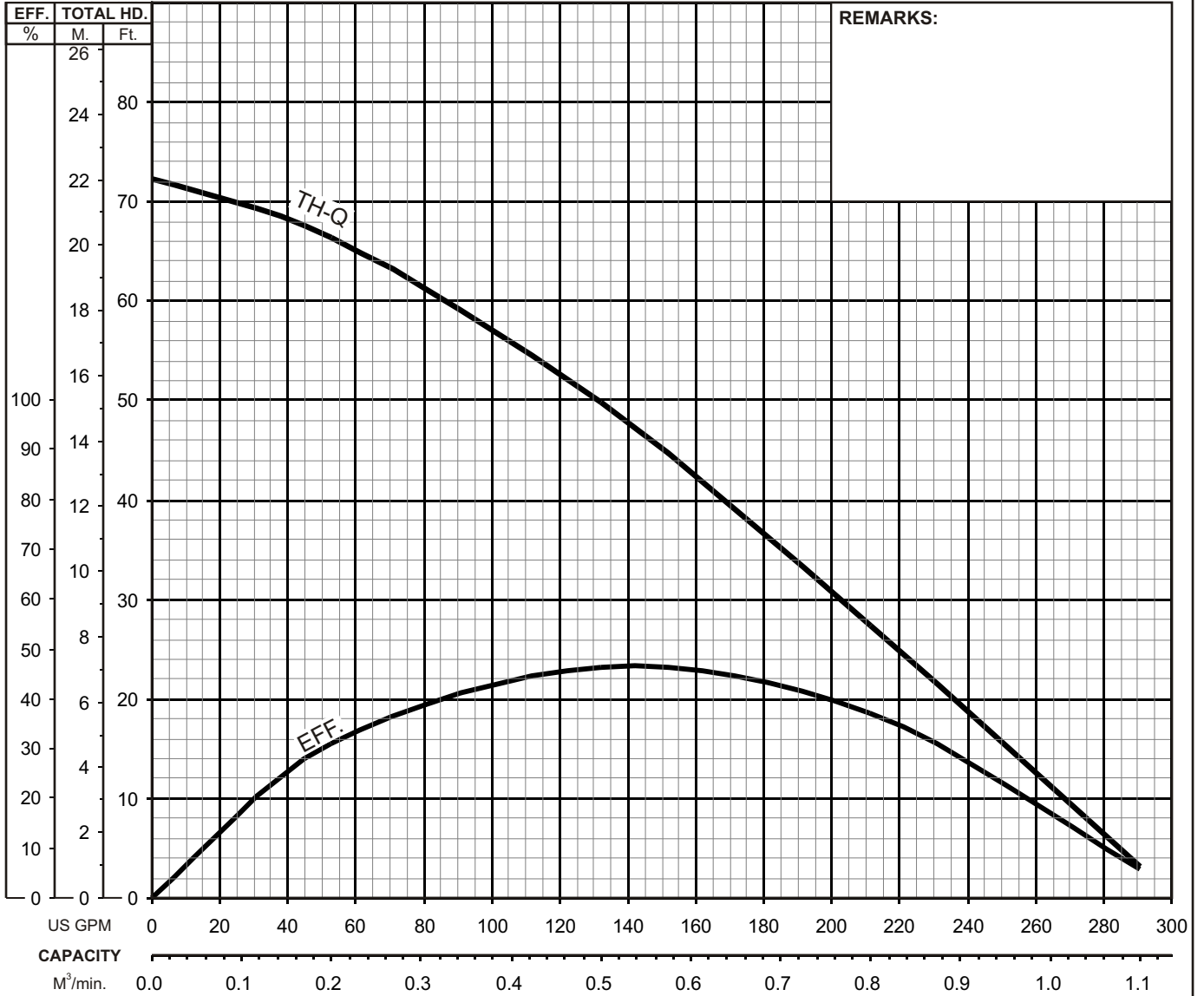
Model	kW	NOM. SIZE					C.W.L.	Wt. (kg)
			A1	B	B1	D	W1	
LH33.0-60	3	80	121	645	524	185	150	42



# LH - SERIES DEWATERING PUMPS

# PERFORMANCE CURVE

MODEL	BORE	HP	KW	RPM	SOLIDS DIA	LIQUID	SG.	VISCOSITY	TEMP.
LH33.0-60	3"/80mm	4	3	3430	0.236"/6mm	Water	1.0	1.123 CST	60°F
PUMP TYPE	PHASE	VOLTAGE	AMPERAGE	HZ	STARTING METHOD	INS. CLASS			
Dewatering Pump	3	208 - 230 / 460 / 575	12.3 - 12.0 / 6.0 / 4.7	60	Direct On Line	F			
CURVE No.	DATE	PHASE	VOLTAGE	AMPERAGE	HZ	STARTING METHOD	INS. CLASS		
-	-	-	-	-	-	-	-		



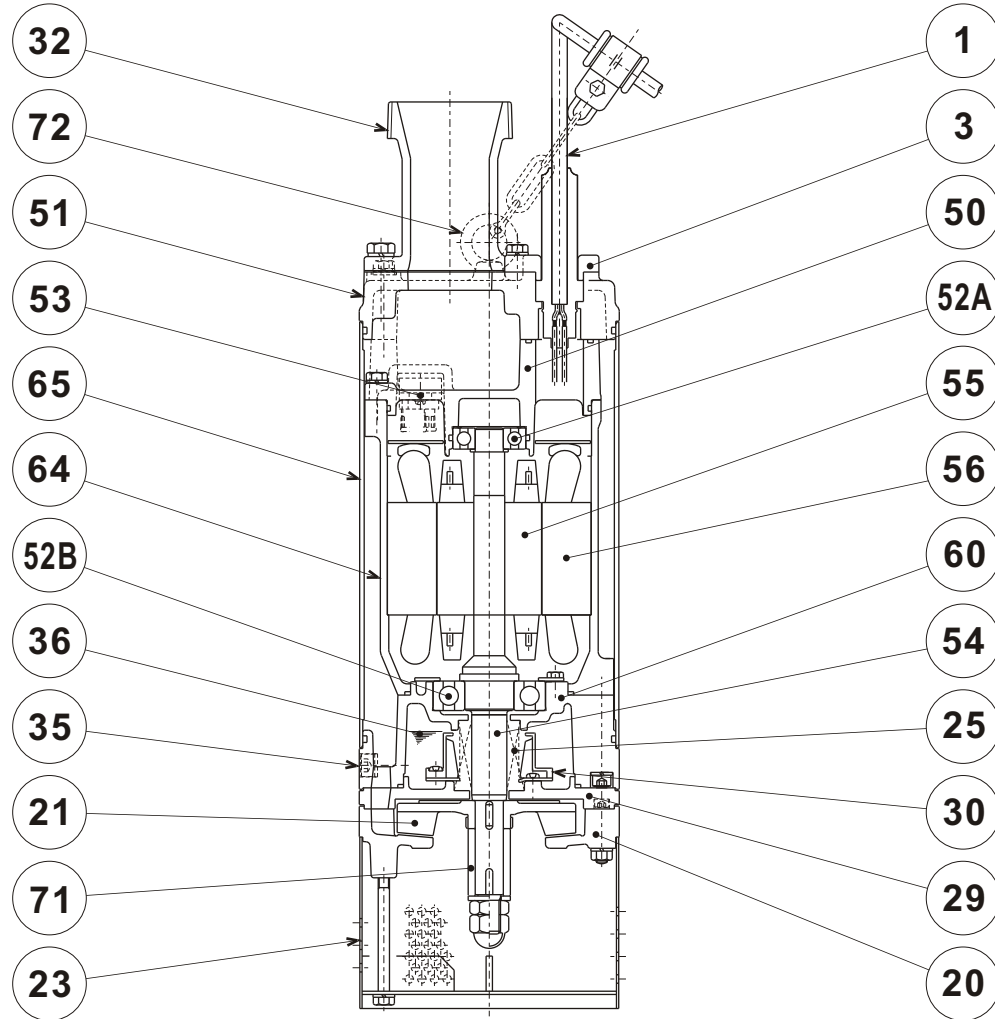


**TSURUMI PUMP**

**LH - SERIES  
DEWATERING PUMPS**

**SECTIONAL VIEW**

**LH33.0-60**



ITEM#	DESCRIPTION	MAIN MATERIAL / NOTE	ASTM, AISI CODE	RELATED EN CODE	Q'TY
1	Power Cable	Chloroprene Sheath AWG14/4-65ft			1
3	Gland	Cast Iron	A48M Class30B	EN 1561 GJL-200	1
20	Pump Casing	Ductile Cast Iron	A536 65-45-12	EN 1563 GJS-450-10	1
21	Impeller	High Chrome Cast Iron	A532 Class TypeA	DIN 1695 G-X260Cr27	1
23	Suction Strainer	Steel (Cold Rolled )	A109/A1008	EN 10130	1
25	Mechanical Seal	Silicon Carbide / H-25T			1
29	Oil Casing	Ductile Cast Iron	A536 65-45-12	EN 1563 GJS-450-10	1
30	Oil Lifter	PBT Resin W/GF40			1
32	Discharge Connection	Ductile Cast Iron / NPT 3"	A536 65-45-12	EN 1563 GJS-450-10	1
35	Oil Plug	Stainless Steel	S 30400	1.4301	1
36	Lubricant	Turbine Oil ISO VG32 or SAE 10W-20			
50	Motor Bracket	Cast Iron	A48M Class30B	EN 1561 GJL-200	1
51	Head Cover	Cast Iron	A48M Class30B	EN 1561 GJL-200	1
52A	Upper Bearing	#6304ZZC3			1
52B	Lower Bearing	#6307ZZC3			1
53	Motor Protector				1
54	Shaft	Stainless Steel	S 42000	1.4028	1
55	Rotor				1
56	Stator				1
60	Bearing Housing	Cast Iron	A48M Class30B	EN 1561 GJL-200	1
64	Motor Housing	Cast Iron	A48M Class30B	EN 1561 GJL-200	1
65	Outer Cover	Steel (Cold Rolled )	A109/A1008	EN 10130	1
71	Shaft Sleeve	Stainless Steel	S 40300	1.4000	1
72	Lifting Lug Bolt	Stainless Steel	S 30400	1.4301	2

## Parts List

ITEM	PARTS No.	DESCRIPTION	Q'TY	SIZE	MATERIAL		NOTES
1	140-056-11	Hex. Bolt 8x30	2	M8x30	SUS304		
2	142-163-18	Spring Washer M8	2	M8			
3	003-000-06	Gland LH23/33	1	d26xP.C.60	FC		
4	001-001-18	Cable w/Gland 65' LH23/33	1	2PNCTF4Cx2mm	LH		
5	010-124-15	Cable Clip Rubber	1	No.3	NBR		
6	010-120-18	Cable Clip	1	No.2-1	SPC		
7	140-032-37	Hex. Bolt M6 x 15	1	M6x12	SWRM		
8	095-131-18	Chain	1	d4(3-Link)	SS		
9	141-004-59	Hex. Nut M6	1	M6	SWRM		
10	011-110-11	Shackle	1	6mm	SS		
11	140-076-17	Hex. Bolt 10x30	3	M10x30	SUS304		
12	142-164-19	Spring Washer M10	3	M10			
13	032-000-22	Hose Coupling 3" NPT LH33.0	1	NPT-3	FCD		
14	121-000-32	Packing for Coupling LH23.0W	1	P.C.98xd60x1t	THREESHEET	*	
15	072-100-20	Eye Bolt M10	2	M10	SUS304		
16	140-064-12	Hex. Bolt 8x70 SUS304	4	M8x70	SUS304		
17	142-163-18	Spring Washer M8	4	M8			
18	142-337-15	Seal Washer SM-8	4	SM-8	SUS+NBR	*	
19	051-000-12	Head Cover LH23.0W	1		FC		
20	122-431-18	O-Ring 171.04 x 3.53	1	171.04xd3.53	NBR	*	
21	140-055-10	Hex Bolt 8 x 25	4	M8x25	SUS304		
22	142-163-18	Spring Washer M8	4	M8			
23	122-119-17	O-Ring G-40	1	G-40	NBR	*	
24	050-000-18	Motor Bracket LH23.0W	1		FC		
25	122-139-13	O-Ring G-140	1	G-140	NBR	*	
26	053-000-38	Mtr Protector (220-60,220/230-50) KA313-GCTL110	1	KA313-GCTL110	(T.C)		
26	053-477-19	Mtr Protector KA313-GQXL104	1	KA313-GQXL104	(T.C)		
26	053-000-39	Mtr Protector (525-50/575-60)	1	KA313-GQTL104	(T.C)		
27	143-126-12	Screw	2	M4x12, w/ S.Washer & Washer	SWRM		
28	009-000-37	Intermediate Lead Wire UL-1015	1	UL-1015,AWG14,L=260,2-4			
29	143-085-34	Cross Pan Screw 4x6 BSBM	1	M4 x 6L	SWRM		
30	058-000-07	L.W. Prot. Plate LH23.0W	1	d65.5xd144x2t	Bakelite		
31	064-000-38	Motor Frame	1		FC		
32	142-196-10	Wave Washer #6205/6304	1	#6205/6304	SK-5		
33	122-367-12	O-Ring 52x3.1	1	52xd3.1	NBR	*	
34	052-107-12	Bearing	1	6304ZZC3			
35	061-174-18	Slinger	1	d20xD27x2t	SPC		
36	055-000-59	Rotor LH2(3)3.0-50/60	1		SUS		
37	147-125-13	Impeller Key 5x5x15	2	5x5x15l	SUS		
38	056-001-70	Stator 220V LH33.0-60	1				
38	056-001-71	Stator (380/415-50)	1				
38	056-001-73	Stator 575V LH2(3)3.0W-60	1				
39	065-000-16	Outer Cover LH33.0	1		SPCC		
40	140-030-51	Hex. Bolt M6x12	3	M6x12	SWRM		
41	062-219-19	Bearing Cover	1	d70xD105x2.3t	SPCC		
42	052-110-18	Bearing	1	6307ZZC3			
43	122-133-17	O-Ring G-110	1	G-110	NBR	*	
44	122-431-18	O-Ring 171.04 x 3.53	1	171.04xd3.53	NBR	*	
45	060-000-36	Brg Housing LH23/33	1		FC		
46	121-246-11	Packing 10.3x16x2t	1	d10.3xD16x2t	PE-sheet	*	
47	035-124-12	Oil Plug 10x15	1	M10 x 15	SUS304		

Parts List							
ITEM	PARTS No.	DESCRIPTION	Q'TY	SIZE	MATERIAL		NOTES
48	142-163-18	Spring Washer M8	4	M8			
49	140-278-11	Hex. Bolt M8x70	4	M8x70	SUS304		
50	025-255-12	Mechanical Seal H-25T	1	H-25T	SiC		
51	143-070-23	Cross Pan Screw (Scotch) 5x6	2	M5x6	SWRM		
52	030-143-12	Oil Lifter H-25	1	H-25(A)(T)	Resin		
53	143-070-10	Cross Head Screw 5x6	4	M5 x 6L	SWRM		
54	030-148-17	Fixing Plate HT-2530	1	HT-2530	SPCC		
55	122-135-19	O-Ring G-120 (3.1)	1	G-120	NBR	*	
56	029-000-12	Oil Casing LH23.0W/33.0	1	LH23.0W/LH33.0	FCD		
57	140-252-19	Socket Bolt 6x20	4	M6x20	SUS304		
58	040-106-27	Impeller Shim	0	d20.2xD30x0.3t	SUS304		
59	021-005-91	Impeller LH33.0	1	60Hz	HICRFC		021-001-47 (Old)
60	071-000-11	Shaft Sleeve LH33.0	1	d20x.d30x48L	SUS403		
61	142-130-16	Plain Washer M16	1	M16	SUS304		
62	141-008-40	Hex. Nut M16 T=10	1	M16(t=10)	SUS304		
63	141-033-15	Hex. Cap Nut M16	1	M16	SUS304		
64	020-000-57	Pump Casing LH33.0	1	LH33.0-50/60	FCD		
65	144-000-19	Stud Bolt 8x70 LH33.0	4	M8x70(18/16)	SUS304		
66	142-163-18	Spring Washer M8	4	M8			
67	141-005-18	Hex. Nut M8	4	M8	SUS304		
68	023-000-24	Strainer LH23.0, LH33.0	1	LH23.0W/LH33.0	SPCC		
69	142-163-18	Spring Washer M8	4	M8			
70	140-070-11	Hex. Bolt M8x100	4	M8x100	SUS304		
<b>&gt;&gt;&gt;&gt; Packing O-Ring Kit</b>							
	173-000-41	Pack O-Ring Set LH23/33.0	1	(*)			
14	121-000-32	Packing for Coupling LH23.0W	1	P.C.98xd60x1t	THREESHEET	*	
18	142-337-15	Seal Washer SM-8	4	SM-8	SUS+NBR	*	
20	122-431-18	O-Ring 171.04 x 3.53	1	171.04xd3.53	NBR	*	
23	122-119-17	O-Ring G-40	1	G-40	NBR	*	
25	122-139-13	O-Ring G-140	1	G-140	NBR	*	
33	122-367-12	O-Ring 52x3.1	1	52xd3.1	NBR	*	
43	122-133-17	O-Ring G-110	1	G-110	NBR	*	
44	122-431-18	O-Ring 171.04 x 3.53	1	171.04xd3.53	NBR	*	
46	121-246-11	Packing 10.3x16x2t	1	d10.3xD16x2t	PE-sheet	*	
55	122-135-19	O-Ring G-120 (3.1)	1	G-120	NBR	*	
<b>&gt;&gt;&gt;&gt; OPTIONAL</b>							
4	001-001-18-100FT	Cable w/Gland 100' LH23/33	1	2PNCTF4C x 100'	2PNCTF		
4	001-001-18-150FT	Cable w/Gland 150' LH23/33	1	2PNCTF4C x 150'	2PNCTF		
13	032-000-21	Hose Coupling 2" NPT	1	NPT-2"	FCD		
59	021-001-46	Impeller LH33.0	1	50HZ	HICRFC		
	Lubricant	Turbine Oil #VG32 380ml		SAE (10W-20)			

**NOTE:**

Pricing in U.S. currency and subject to change without notice.  
 Items with (\*) indicate items are included in the set  
 No Electrical Components will be accepted as a return

Parts List

High Head Dewatering Pumps

DATE: DEC 2009

