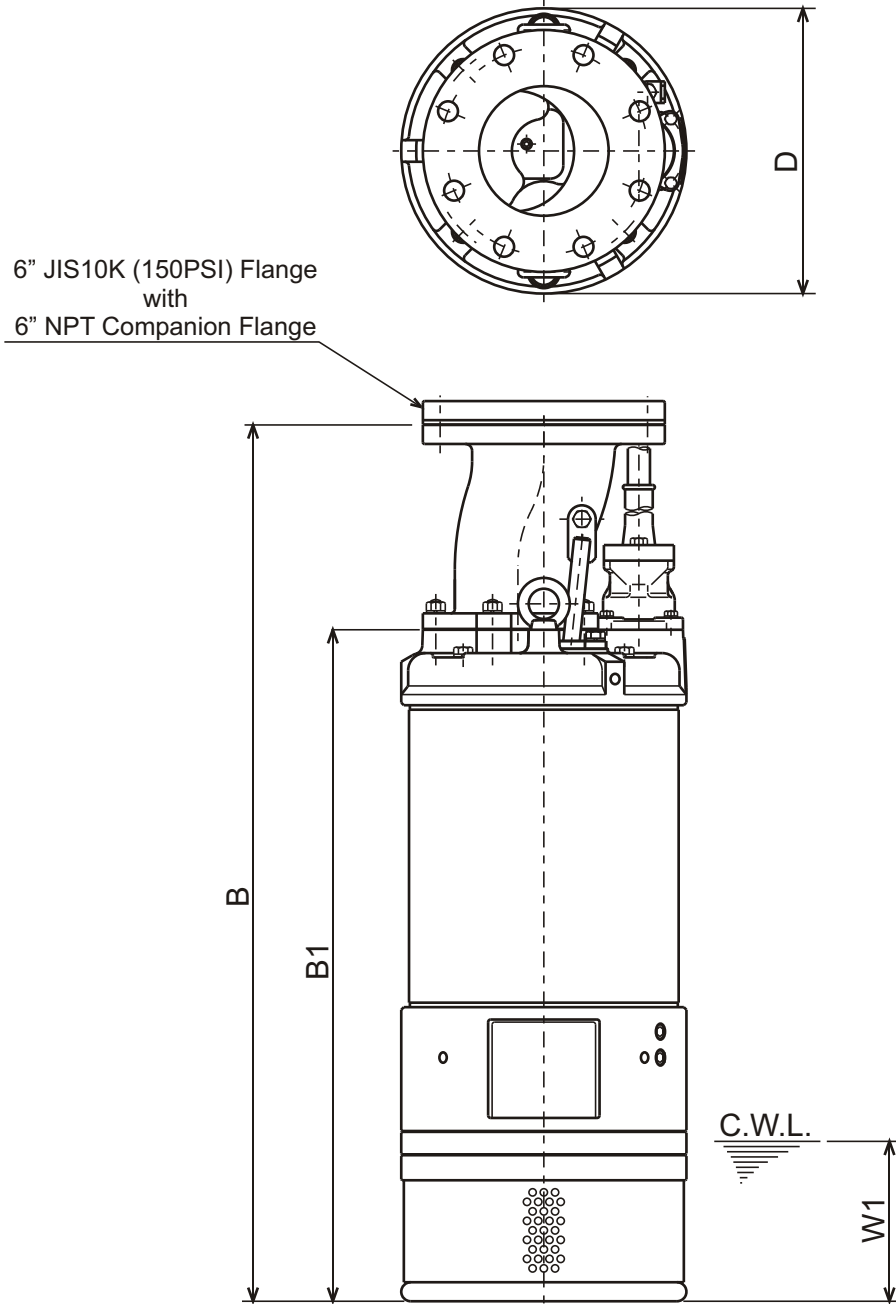




**LH - SERIES
DEWATERING PUMPS**

DIMENSIONS

LH615-61



C.W.L. : Continuous running Water Level

DIMENSIONS: USCS (Inch)

Model	HP	NOM. SIZE	Pump & Motor			C.W.L.	Wt. (lbs.)
			B	B1	D	W1	
LH615-61	20	6"	39 15/16	30 9/16	13	7 1/4	470

DIMENSIONS: METRIC (mm)

Model	kW	NOM. SIZE	Pump & Motor			C.W.L.	Wt. (kg)
			B	B1	D	W1	
LH615-61	15	150	1014	777	330	185	213

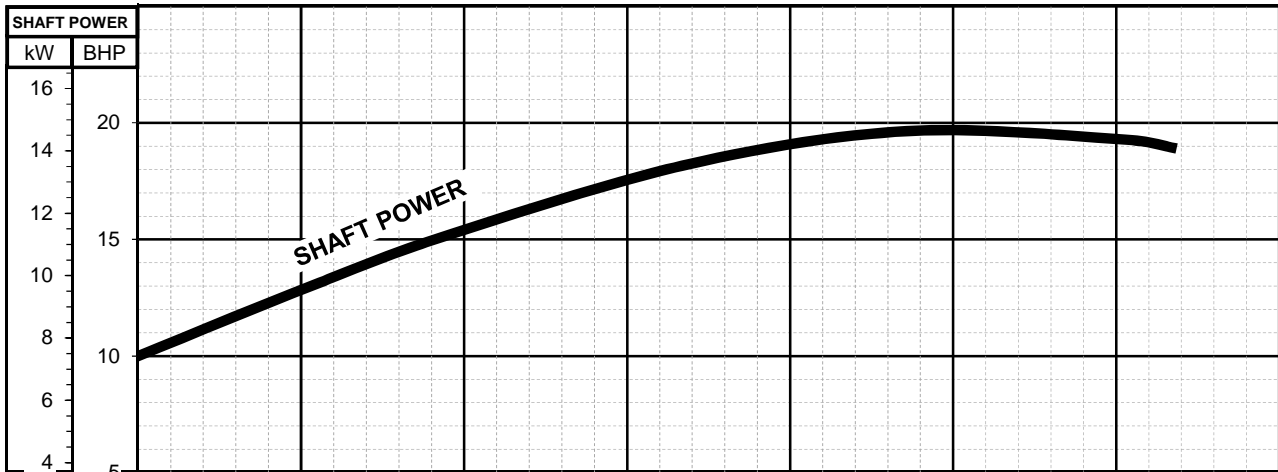
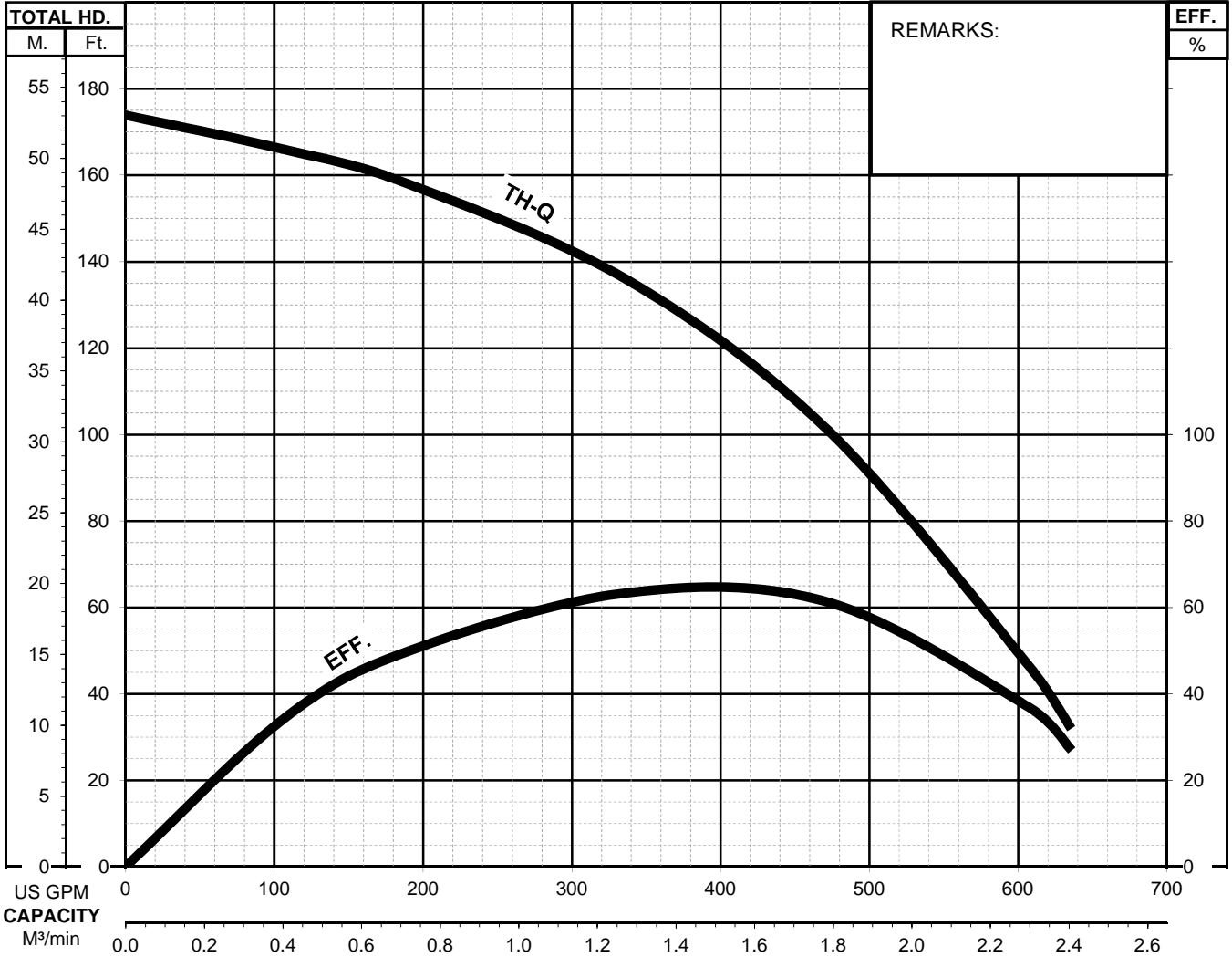


LH - SEREIES

SUBMERSIBLE DEWATERING PUMPS

PERFORMANCE
CURVE

MODEL	BORE	HP	kW	RPM	SOLIDS DIA.	LIQUID	SG.	VISCOSITY	TEMP.
LH615-61	6"/150mm	20	15	3465	0.334"/8.5mm	Water	1.0	1.123cSt.	60°F
PUMP TYPE	PHASE	VOLTAGE	AMPERAGE	HZ	STARTING METHOD	INS. CLASS			
Dewatering Pump	3	208 / 230 / 460 / 575	53 / 48 / 24 / 19	60	Direct On Line	B			
CURVE No.	DATE	PHASE	VOLTAGE	AMPERAGE	HZ	STARTING METHOD	INS. CLASS		
-	-	-	-	-	-	-	-		



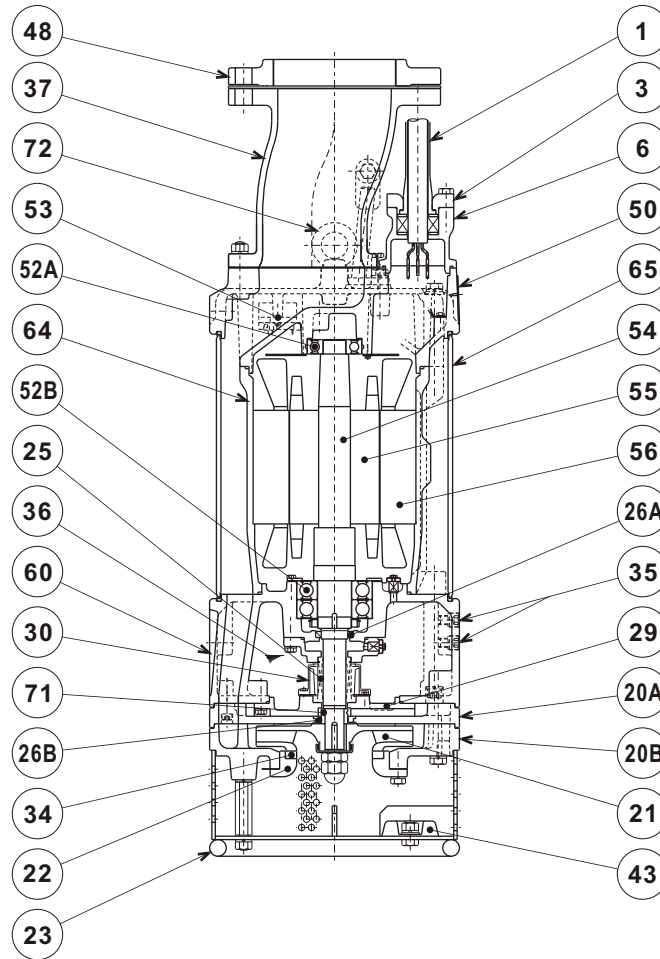


TSURUMI PUMP

**LH - SERIES
DEWATERING PUMPS**

SECTIONAL VIEW

LH615-61



ITEM#	DESCRIPTION	MAIN MATERIAL / NOTE	ASTM, AISI CODE	RELATED EN CODE	Q'TY
1	Power Cable	Chloroprene Sheath AWG6/4-50ft			1
3	Gland	Cast Iron	A48M Class30B	EN 1561 GJL-200	1
6	Stuffing Box	Cast Iron	A48M Class30B	EN 1561 GJL-200	1
20A	Upper Pump Casing	Ductile Cast Iron	A536 65-45-12	EN 1563 GJS-450-10	1
20B	Lower Pump Casing	Ductile Cast Iron	A536 65-45-12	EN 1563 GJS-450-10	1
21	Impeller	High Chrome Cast Iron	A532 Class TypeA	DIN 1695 G-X260Cr27	1
22	Suction Cover	Cast Iron	A48M Class30B	EN 1561 GJL-200	1
23	Suction Strainer	Steel	A283 Grade D	EN 10025 S275	1
25	Mechanical Seal	Silicon Carbide / H-30T			1
26A	Oil Seal	NBR / SC35508			1
26B	Labyrinth Ring	Stainless Steel	S 30400	1.4301	1
29	Oil Casing	Cast Iron	A48M Class30B	EN 1561 GJL-200	1
30	Oil Lifter	PBT Resin W/GF40			1
34	Mouth Ring	High Chrome Cast Iron	A532 Class TypeA	DIN 1695 G-X260Cr27	1
35	Oil Plug	Stainless Steel	S 30400	1.4301	2
36	Lubricant	Turbine Oil ISO VG32 or SAE 10W-20			
37	Discharge Pipe	Ductile Cast Iron / 6" JIS10K	A536 65-45-12	EN 1563 GJS-450-10	1
43	Cathodic Protection Plate	Aluminium Alloy			4
48	Companion Flange	Cast Iron / NPT 6" JIS10K	A48M Class30B	EN 1561 GJL-200	1
50	Motor Bracket	Cast Iron	A48M Class30B	EN 1561 GJL-200	1
52A	Upper Bearing	#6306ZZC3			1
52B	Lower Bearing	#6309ZZD2C3			1
53	Motor Protector				1
54	Shaft	Stainless Steel	S 42000	1.4028	1
55	Rotor				1
56	Stator				1
60	Bearing Housing	Cast Iron	A48M Class30B	EN 1561 GJL-200	1
64	Motor Housing	Cast Iron	A48M Class30B	EN 1561 GJL-200	1
65	Outer Cover	Steel	A283 Grade D	EN 10025 S275	1
71	Shaft Sleeve	Stainless Steel	S 40300	1.4000	1
72	Lifting Lug Bolt	Stainless Steel	S 30400	1.4301	2

PARTS LIST		HI PRESSURE DEWATERING PUMP			7/3/2018	
ITEM	PART No.	DESCRIPTION	QTY	SIZE	MATERIAL	NOTES
1	141-004-17	Hex.Nut	3	M6	SUS304	
2	010-101-16	Cable Clip	2	No.3	SPC	
3	140-035-14	Hex.Bolt	3	M6x20	SUS304	
4	001-007-64	Cabtyre Cable Set (50') 230-575V 60Hz (USA)	1	2PNCTF4Cx14mm2	(Vm)	
5	010-128-19	Cable Clip Rubber	1	75x80x2t	NBR	
6	011-110-11	Shackle	1	6mm(M8,SC)	SS	
7	095-132-19	Chain	1	4mm(6L)	SS	
8	072-107-27	Eye Bolt	2	M16	SUS304	
9	140-076-17	Hex.Bolt	2	M10x30	SUS304	Included in ITEM#4 Cable Assembly
10	003-105-18	Gland	1	No.3	FC	Included in ITEM#4 Cable Assembly
11	002-105-15	Cable Protection Tube	1	No.5	NBR	Included in ITEM#4 Cable Assembly
12	005-103-12	Bush Washer 60Hz(USA)	2	d29xd53.5x3.2t	SPC	Included in ITEM#4 Cable Assembly
13	004-110-19	Cable Bush 60Hz(USA)	1	No.6	SBR	Included in ITEM#4 Cable Assembly
14	140-055-10	Hex.Bolt	4	M8x25	SUS304	
15	006-160-10	Stuffing Box	1	GHZ-311W	FC	Included in ITEM#4 Cable Assembly
16	122-128-19	O-Ring	1	G-85(84.4xd3.1)	NBR	*
17	009-128-15	Terminal	6	E (middle)	CU	Included in ITEM#4 Cable Assembly
18	009-118-12	Terminal(C/W Screw)	3	d12x(d8xd8)x25l	C3604	
19	002-115-18	Heat Shrink Tube (Sold per meter)	m	EVA(d16.5x1t)	(Vm)	
20	002-116-19	Heat Shrink Tube (Sold per meter)	m	A4(d20x0.35t)	(Vm)	
21	143-041-12	Pan Screw	1	M6x8	SWRM	
22	142-126-48	Plain Washer	1	M6	C3604	
23	009-107-18	Terminal	1	R-14-6	CU	Included in ITEM#4 Cable Assembly
24	037-000-67	Center-Flange Discharge Pipe	1	LH615-51/61	FCD	
25	141-007-10	Hex.Nut	5	M12	SUS304	
26	142-165-10	Spring Washer	5	M12	SUS304	
27	121-374-19	Packing	1	d140xd172x1t	THREE SHEET	*
28	144-000-46	Stud Bolt	5	M12x64(24/27)	SUS304	
31	070-103-10	L-Shape Fitting	1	KT-55	SPC	
32	140-097-14	Hex.Bolt	2	M12x30	SUS304	
33	142-165-10	Spring Washer	2	M12	SUS304	
34	127-283-18	Stay 2	1	LH615-51/61For (Left)	SS	
35	127-282-17	Stay 1	1	LH615-51/61For (Right)	SS	
36	140-097-14	Hex.Bolt	2	M12x30	SUS304	
37	142-165-10	Spring Washer	2	M12	SUS304	
38	140-113-17	Hex.Bolt	4	M12x120	SUS304	
39	142-165-10	Spring Washer	4	M12	SUS304	
40	142-298-13	Seal Washer	4	SM-12	SUS+NBR	*

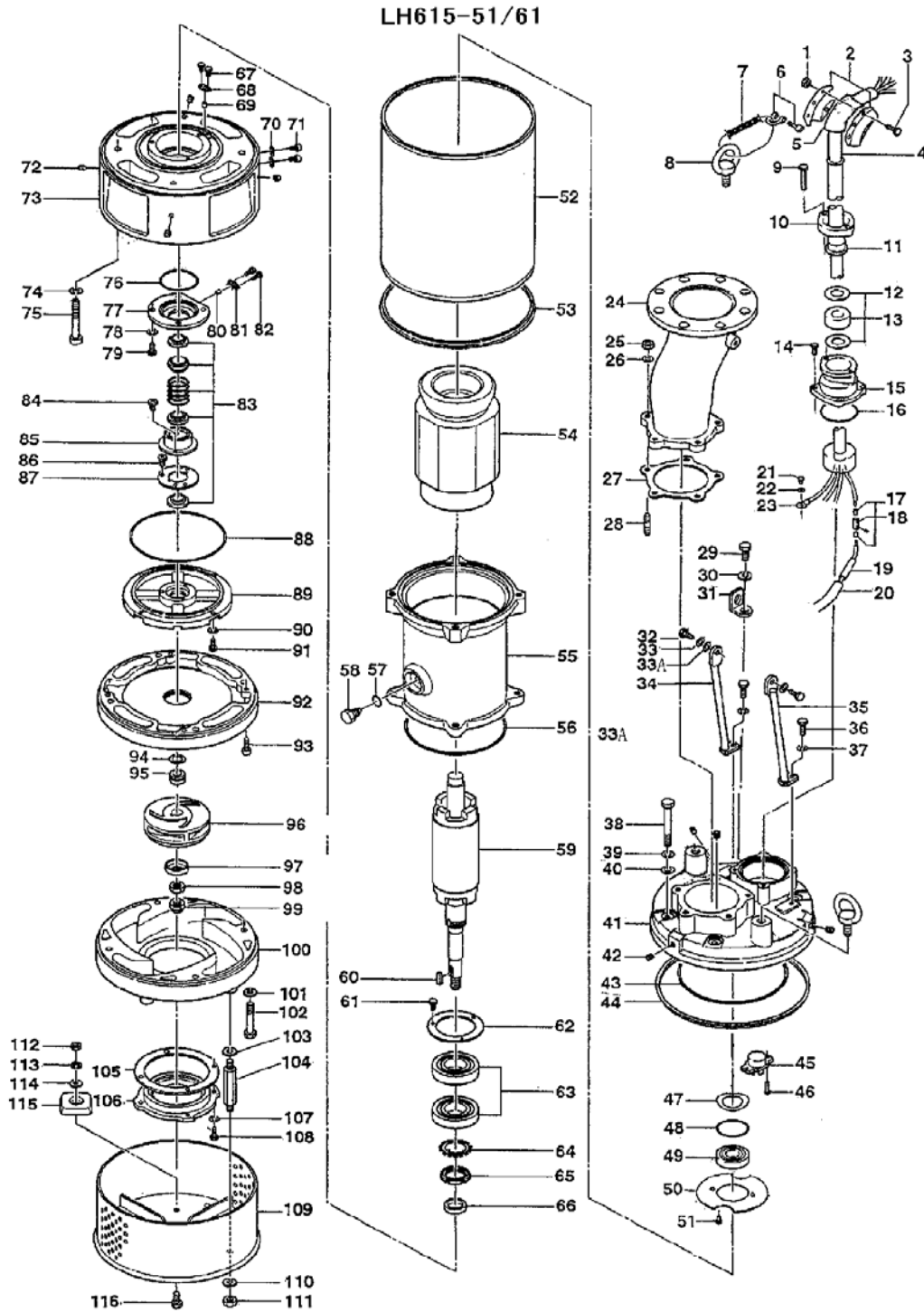
PARTS LIST		HI PRESSURE DEWATERING PUMP			7/3/2018	
ITEM	PART No.	DESCRIPTION	QTY	SIZE	MATERIAL	NOTES
41	050-494-13	Motor Bracket	1		FC	
42	144-584-15	Hex. Socket Cap Screw	4	M12x16	SUS304	
43	122-247-15	O-Ring	1	228.19xd3.53	NBR	*
44	121-565-19	Packing	1	d289xd300.4x10t	NBR	*
45	053-144-14	Motor Protector 230V-60Hz(USA)	1	KA315-JTZ00	(B.C)	
	053-000-54	Motor Protector 460V-60Hz(USA)	1	KA315-JKAL00	(B.C)	
	053-000-55	Motor Protector 575V-60Hz(USA)	1	KA315-JKXL00	(B.C)	
46	143-019-11	Pan Screw	2	M4x16	SWRM	
47	142-198-12	Wave Washer	1	6306	SK5	
48	122-245-13	O-Ring	1	71.4xd3.1	NBR	*
49	052-109-14	Bearing	1	6306ZZC3		
50	058-000-11	Lead Wire Protection Plate	1	d74xd175x1.2t	SPCC	
51	140-002-25	Hex.Bolt	2	M4x8	SWRM	
52	065-386-17	Outer Cover	1		SS	
53	121-565-19	Packing	1	d289xd300.4x10t	NBR	*
54		Stator	1Set			
55	064-571-18	Motor Frame	1		FC	
56	122-148-15	O-Ring	1	G-185(184.3xd5.7)	NBR	*
57	122-259-10	O-Ring	1	12xd3	NBR	*
58	144-490-13	Stator Set Bolt	1	M12(B=21)	SUS403	
59	055-885-10	Rotor	1Set			
60	147-023-10	Impeller Key	1	7x7x32l	SUS420	
61	140-033-25	Hex.Bolt	3	M6x16	SWRM	
62	062-223-16	Bearing Fixing Plate	1	d92xd130x4.5t	SS	
63	052-140-17	Bearing	1Set	6309ZZD2C3		
64	142-242-12	Bearing Washer	1	AW09	SPCC	
65	141-074-18	Bearing Nut	1	AN09	SS	
66	026-217-15	Oil Seal	1	SC-35508	NBR	
67	140-016-19	Hex.Bolt	2	M5x12	SUS304	
68	003-219-16	Gland	1		SPHC	
69	032-423-15	Bush	1	d9.5x18.5L	NBR	
70	121-247-12	Packing	2	d12.3xd18x2t	PE	*
71	035-113-18	Oil Plug	2	M12x14	SUS304	
72	144-584-15	Hex. Socket Cap Screw	4	M12x16	SUS304	
73	060-490-10	Bearing Housing	1		FC	
74	142-165-10	Spring Washer	4	M12	SUS304	
75	140-517-15	Hex.Socket Cap Bolt	4	M12x150	SUS304	
76	122-127-18	O-Ring	1	G-80(79.4xd3.1)	NBR	*

PARTS LIST		HI PRESSURE DEWATERING PUMP				7/3/2018
ITEM	PART No.	DESCRIPTION	QTY	SIZE	MATERIAL	NOTES
77	028-169-17	Seal Housing	1	LH615-51/61	FC	
78	142-163-18	Spring Washer	4	M8	SUS304	
79	140-055-10	Hex.Bolt	4	M8x25	SUS304	
80	032-423-15	Bush	1	d9.5x18.5L	NBR	
81	003-219-16	Gland	1		SPHC	
82	140-016-19	Hex.Bolt	2	M5x12	SUS304	
83	025-000-73	Mechanical Seal	1	H-30T	SiC	supercedes 025-246-10
84	143-070-23	Pan Screw	2	M5x6	SWRM	
85	030-142-11	Oil Lifter	1	H-30(A)(T)	Resin	
86	143-070-10	Pan Screw	3	M5x6	SWRM	
87	030-151-13	Seal Stopper	1	H-30(A)(T)	SPCC	
88	122-333-19	O-Ring	1	170xd3.1	NBR	*
89	029-397-19	Oil Casing	1	LH47.5/411/615-51/61	FC	
90	142-163-18	Spring Washer	4	M8	SUS304	
91	140-055-10	Hex.Bolt	4	M8x25	SUS304	
92	020-000-32	Upper Pump Casing (w/Labyrinth Ring)	1	LH615-51/61	FCD	
93	140-270-13	Hex.Socket Cap Bolt	4	M8x30	SUS304	
94	040-107-28	Impeller Shim		d25.2xd38x0.3t	SUS304	
95	071-000-02	Shaft Sleeve	1	LH47.5/411/615-51/61	SUS403	
96	021-A00-41	Impeller (60Hz)	1	LH615-61	HiCrFC	
	021-A00-31	Impeller (50Hz) OPTION	1	LH615-51	HiCrFC	50Hz OPTION
97	047-105-27	Impeller Thread Protect.Cover	1	No.4(22)	SUS304	
98	141-009-38	Hex.Nut	1	M20(H=12)	SUS304	
99	141-034-16	Hex.Cap Nut	1	M20	SUS304	
100	020B7219	Pump Casing (Lower)	1	LH615-51/61	FCD	
101	142-165-10	Spring Washer	4	M12	SUS304	
102	140-110-14	Hex.Bolt	4	M12x95	SUS304	
103	142-165-10	Spring Washer	4	M12	SUS304	
104	144-535-11	Stud Bolt	4	M12x110(20/20)	SUS403	
105	120-175-15	Packing (S.Cover)		LH615/422/430-51/61	PE	
106	022-000-09	Suction Cover (w/Mouth Ring)	1	LH615/422/430-51/61	FC	
107	142-164-19	Spring Washer	4	M10	SUS304	
108	140-074-15	Hex.Bolt	4	M10x20	SUS304	
109	023-001-30	Strainer Stand	1	LH615	SS	interchangable with OLD part# 023-475-14
110	142-165-10	Spring Washer	4	M12	SUS304	
111	141-007-10	Hex.Nut	4	M12	SUS304	
112	141-007-10	Hex.Nut	4	M12	SUS304	
113	142-165-10	Spring Washer	4	M12	SUS304	

PARTS LIST		HI PRESSURE DEWATERING PUMP			7/3/2018	
ITEM	PART No.	DESCRIPTION	QTY	SIZE	MATERIAL	NOTES
114	142-129-12	Plain Washer	4	M12	SUS304	
115	043-102-19	Cathodic Protection Plate	4	AB-1HS(75x70x20t)	Al	
116	140-096-13	Hex.Bolt	4	M12x25	SUS304	
		NPT Flange Version				
	048-000-51	Screwed Flange	1	NPT-6(JIS10K)	FC	
	121-108-23	Packing	1	JIS10Kx150mm	NR	
	140-155-11	Hex.Bolt	8	M20x85	SUS304	
	142-168-13	Spring Washer	8	M20	SUS304	
	141-009-12	Hex.Nut	8	M20	SUS304	
	173-000-20	Packing O-Ring Set	1Set	(Marked by *)		
16	122-128-19	O-Ring (S.Box)	1	G-85(84.4xd3.1)	NBR	*
27	121-374-19	Packing (Discharge Pipe)	1	d140xd172x1t	THREE SHEET	*
40	142-298-13	Seal Washer	4	SM-12	SUS+NBR	*
43	122-247-15	O-Ring (M.Bracket/M.Frame)	1	228.19xd3.53	NBR	*
44	121-565-19	Packing (M.Bracket/Out.Cover)	1	d289xd300.4x10t	NBR	*
48	122-245-13	O-Ring (Upp. Bearing)	1	71.4xd3.1	NBR	*
53	121-565-19	Packing (Out.Cover/Brg.Housing)	1	d289xd300.4x10t	NBR	*
56	122-148-15	O-Ring (M.Frame/Brg.Housing)	1	G-185(184.3xd5.7)	NBR	*
57	122-259-10	O-Ring (Stator Set Bolt)	1	12xd3	NBR	*
70	121-247-12	Packing (Oil Plug)	2	d12.3xd18x2t	PE	*
76	122-127-18	O-Ring (Brg.Housing/Seal Housing)	1	G-80(79.4xd3.1)	NBR	*
88	122-333-19	O-Ring (Brg.Housing/O.Casing)	1	170xd3.1	NBR	*
		Lubricant		Turbine Oil VG32 3,850ml		

PARTS LIST		HI PRESSURE DEWATERING PUMP		7/3/2018		
ITEM	PART No.	DESCRIPTION	QTY	SIZE	MATERIAL	NOTES

EXPLODED VIEW



C-00458-1