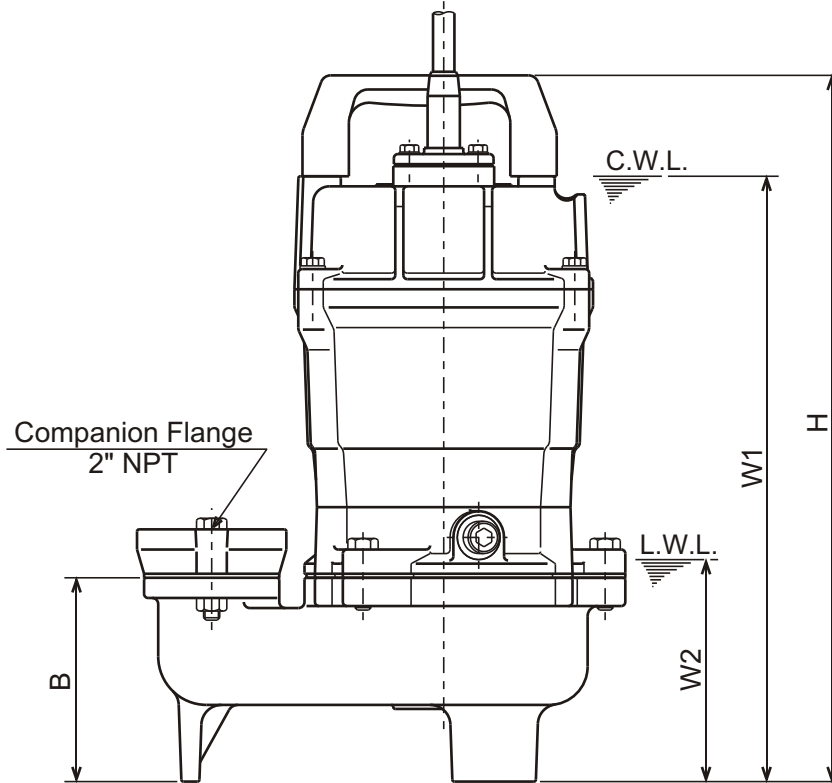
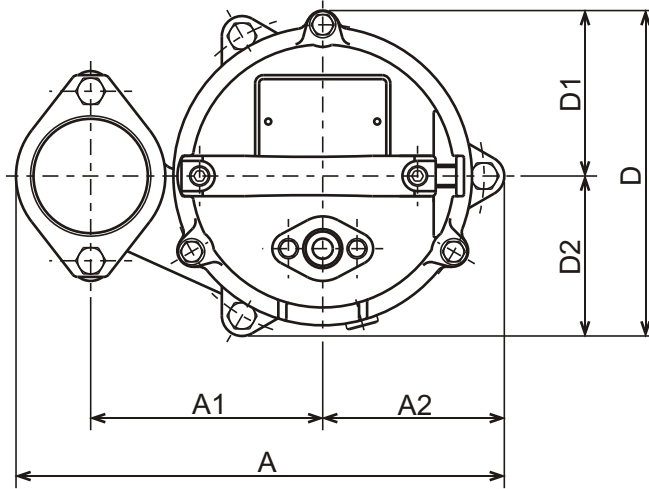




**UT - SERIES**  
**SUBMERSIBLE SEMI-VORTEX-SEWAGE PUMPS**

**DIMENSIONS**

**50UT2.4S-61**



C.W.L. :Continuous running Water Level  
 L.W.L. :Lowest running Water Level

**DIMENSIONS:USCS (Inch)**

Model	HP	NOM. SIZE	Pump & Motor								C.W.L.	L.W.L.	Wt. (lbs.)
			A	A1	A2	B	D	D1	D2	H	W1	W2	
50UT2.4S-61	1/2	2"	9 1/2	4 1/2	3 9/16	4	6 3/8	3 1/4	3 1/8	13 3/4	11 3/4	4 3/8	31

**DIMENSIONS:METRIC (mm)**

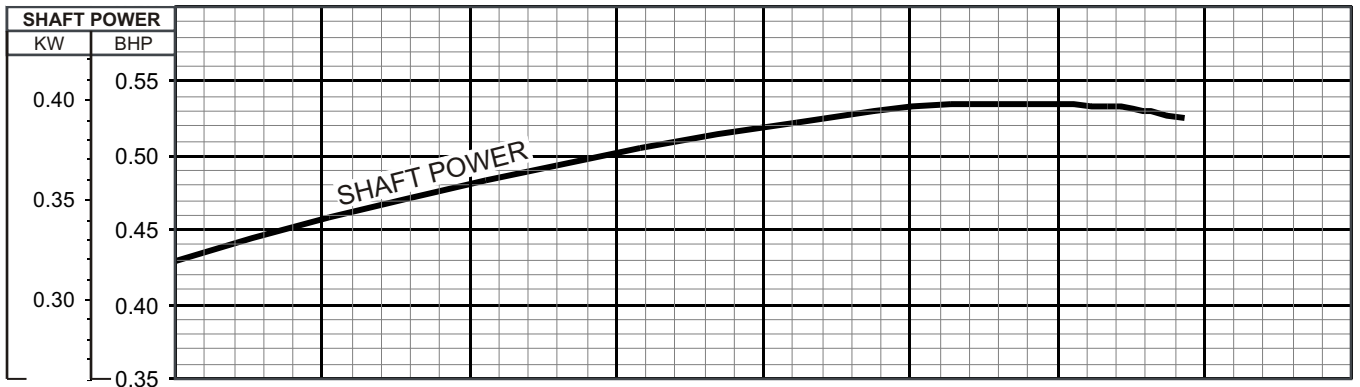
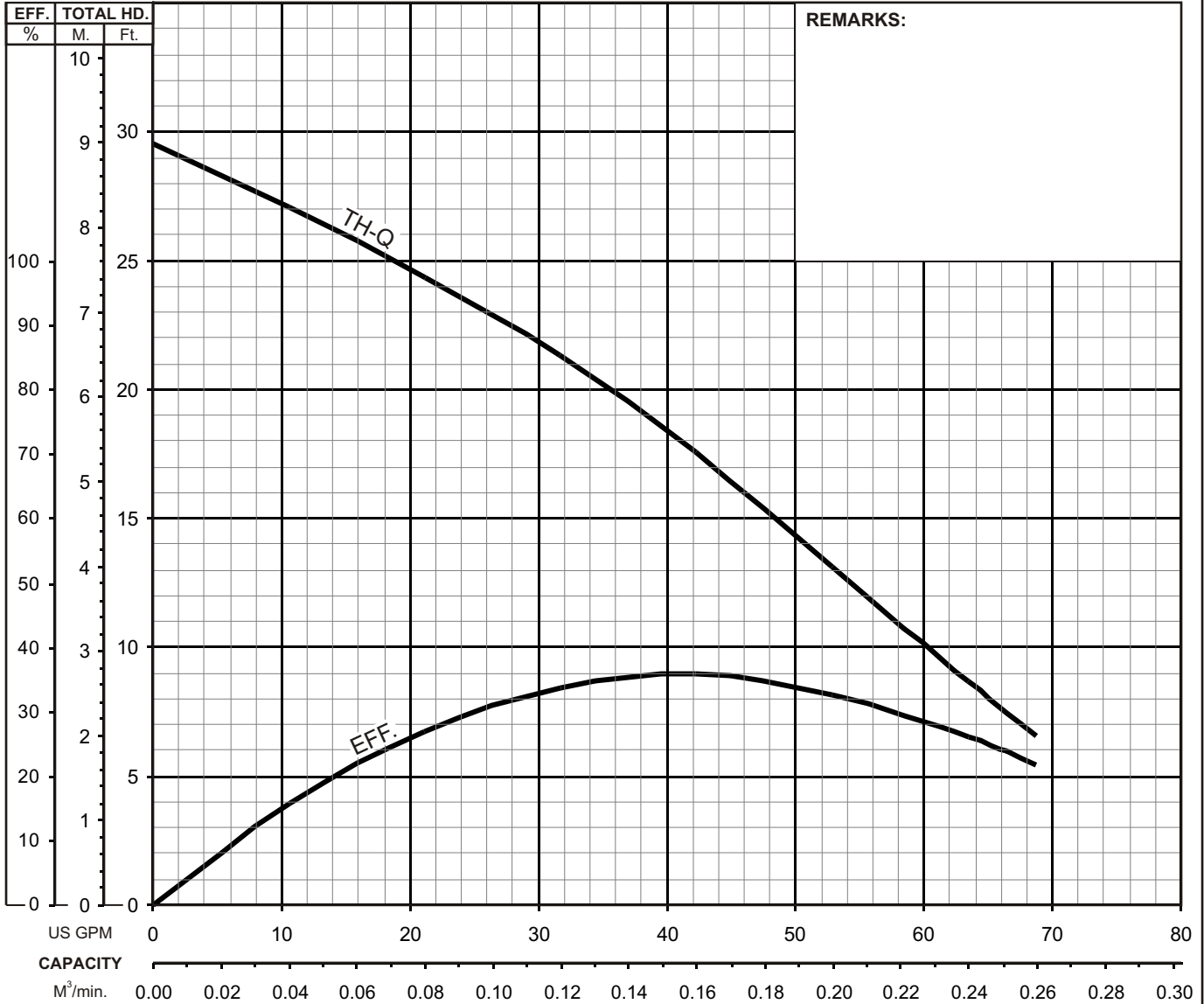
Model	kW	NOM. SIZE	Pump & Motor								C.W.L.	L.W.L.	Wt. (kg)
			A	A1	A2	B	D	D1	D2	H	W1	W2	
50UT2.4S-61	0.40	50	242	115	90	101	161	82	79	350	300	110	14.0



## UT - SERIES SUBMERSIBLE SEMI - VORTEX - SEWAGE PUMPS

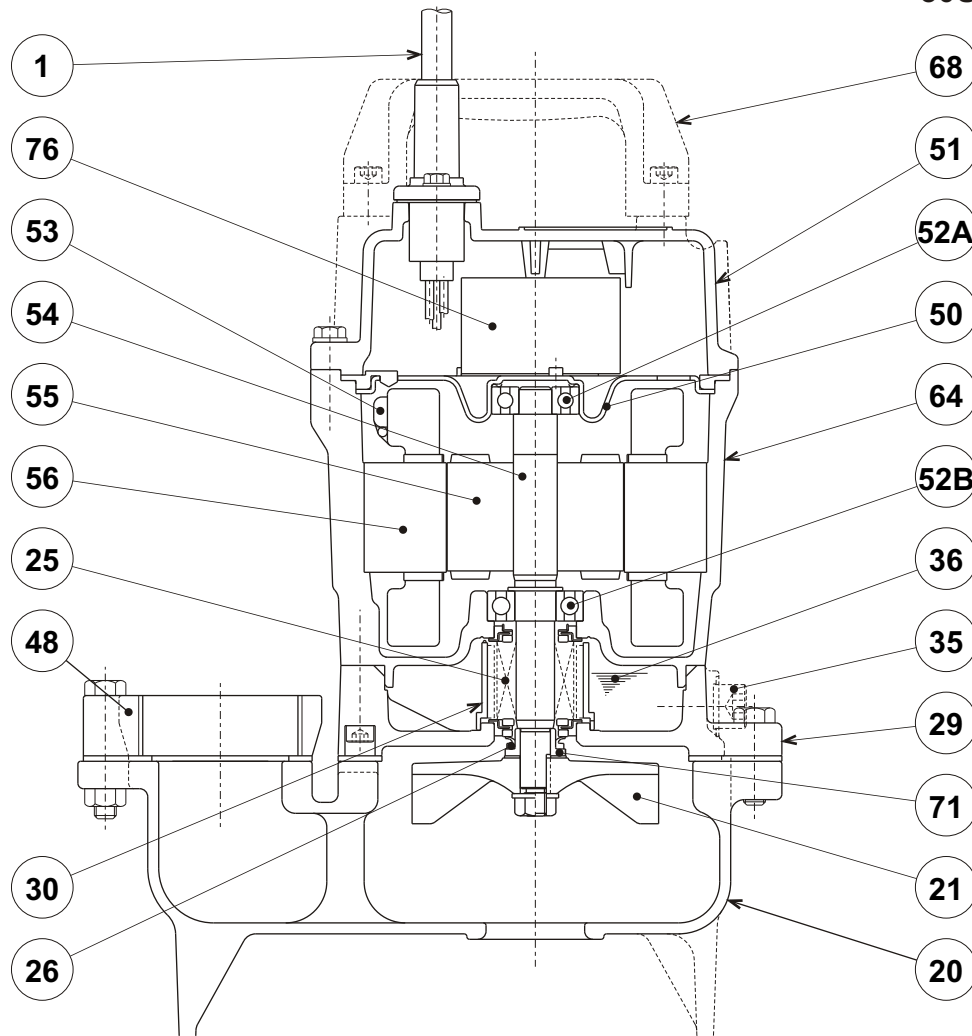
## PERFORMANCE CURVE

MODEL	BORE	HP	KW	RPM	SOLIDS DIA	LIQUID	SG.	VISCOSITY	TEMP.
50UT(Z)2.4S -61	2" / 50mm	0.54	0.40	3366	1.4" / 36mm	Water	1.0	1.123 cSt.	60°F
PUMP TYPE	PHASE	VOLTAGE		AMPERAGE		HZ	STARTING METHOD		INS. CLASS
SUBMERSIBLE SEMI - VORTEX - SEWAGE	Single	110/115/120 /220		5.8/5.7/5.6 /3.4		60	Capacitor-Start		E
CURVE No.	DATE	PHASE	VOLTAGE	AMPERAGE	HZ	STARTING METHOD		INS. CLASS	
-	-	-	-	-	-	-		-	



**TSURUMI PUMP**

**UT - SERIES**  
**SUBMERSIBLE SEMI-VORTEX-SEWAGE PUMPS**

**SECTIONAL VIEW****50UT2.4S-61**

ITEM#	DESCRIPTION	MAIN MATERIAL / NOTE	RELATED ASTM, AISI CODE	RELATED EN CODE	Q'TY
1	Power Cable	PVC Sheath AWG16/3-20ft			1
20	Pump Casing	Cast Iron	A48M Class30B	EN 1561 GJL-200	1
21	Impeller	PPO Resin w/GF20			1
25	Mechanical Seal	Silicon Carbide / W-14VL			1
26	V-Ring	Nitrile Butadiene Rubber			1
29	Oil Casing	Cast Iron	A48M Class30B	EN 1561 GJL-200	1
30	Oil Lifter	PBT Resin			1
35	Oil Plug	Stainless Steel	S 30400	1.4301	1
36	Lubricant	Turbine Oil ISO VG32 or SAE10W-20			
48	Companion Flange	Cast Iron / NPT 2"	A48M Class30B	EN 1561 GJL-200	1
50	Motor Bracket	Steel (Electro-Galvanized)	A591	EN 10152	1
51	Motor Head Cover	Cast Iron	A48M Class30B	EN 1561 GJL-200	1
52A	Upper Bearing	#6201ZZC3			1
52B	Lower Bearing	#6202ZZC3			1
53	Motor Protector				1
54	Shaft	Stainless Steel	S 40300	1.4000	1
55	Rotor				1
56	Stator				1
64	Motor Housing	Cast Iron	A48M Class30B	EN 1561 GJL-200	1
68	Handle	ABS Resin			1
71	Shaft Sleeve	Stainless Steel	S 30400	1.4301	1
76	Capacitor				1

PARTS LIST		SEWER & WASTEWATER PUMPS			9/14/2016	
ITEM	PART No.	DESCRIPTION	QTY	SIZE	MATERIAL	NOTES
1	001-943-36	Cabtyre Cable Set (20') 120V-60Hz(USA)	1	STOW3x1.25mm2(CSA)	LB	
	001-004-33	Cabtyre Cable Set (20') 220V-60Hz(USA)	1	STOW3x1.25mm2	LB	
2	140-427-17	Hex.Bolt (w/Plain Washer)	2	M5x15	SUS304	
3	003-190-10	Gland	1		SUS316	
4	140-253-10	Hex.Socket Cap Bolt	2	M6x25	SUS304	
5	068-146-38	Handle	1	A	Resin	
6	140-396-16	Hex.Bolt (w/Plain Washer)	3	M6x20	SUS304	
7	051-000-28	Motor Head Cover	1		FC	
8	121-000-84	Packing	1		NBR	*
9	076-000-34	Capacitor 120V-60Hz(USA)	1	SH-CAP,32MF-270VAC(three terminals)		
	076-000-07	Capacitor 220V-60Hz(USA)	1	SH-Z,10MF-500VAC(three terminals)		
10	050-486-12	Motor Bracket	1		SECD	
11	009-001-16	Earth Terminal	1Set	UL1015-AWG18,G/Y,L=132		
12	143-086-35	Pan Screw (w/Spring Washer)	1	M4x8	C3604	
13	142-451-16	Wave Washer	2	6201(D=32,t=0.25)	SUP	
14	052-100-15	Bearing	1	6201ZZC3		
15	055-000-29	Rotor	1Set	w/Bearing		
16	061-180-17	Bearing Collar	1	d15.1xd20x1.6t	SS	
17	052-101-16	Bearing	1	6202ZZC3		
18	056-004-04	Stator 120V-60Hz(USA)	1Set	w/Miniature Protector		
	056-004-05	Stator 220V-60Hz(USA)	1Set	w/Miniature Protector		
19	064-000-71	Motor Frame	1		FC	
20	025-291-10	Mechanical Seal	1	W-14VL	SiC+CCBN	
21	030-000-09	Oil Lifter	1	W-14VL	Resin	
22	122-133-17	O-Ring	1	G-110(109.4xd3.1)	NBR	*
23	140-056-11	Hex.Bolt	3	M8x30	SUS304	
24	029-000-58	Oil Casing	1	HS2.4(S)-52/62	FC	
25	121-246-11	Packing	1	d10.3xd16x2t	PE	*
26	035-124-12	Oil Plug	1	M10x15	SUS304	
27	121-000-20	Packing	1	HS-4E	NR	*
28	140-256-13	Hex.Socket Cap Bolt	3	M6x35	SUS304	
A	122-441-11	V-Ring	1	VR-14	NBR	
29	071-292-14	Shaft Sleeve	1	LB3-250/480	SUS304	
30	142-354-18	Conical Spring Washer	1	d11.2xd22.5x0.8t	SUS304	
31	021G2629	Impeller (60Hz)	1	50UT2.4S-61	Resin	
32	142-127-10	Plain Washer	1	M8	SUS304	
33	141-005-18	Hex.Nut	1	M8	SUS304	
34	020-001-85	Pump Casing	1	40UT2.4S-51/61	FC	

PARTS LIST		SEWER & WASTEWATER PUMPS			9/14/2016	
ITEM	PART No.	DESCRIPTION	QTY	SIZE	MATERIAL	NOTES
35	140-059-14	Hex.Bolt	2	M8x45	SUS304	
36	048-180-16	Screwed Flange	1	NPT-2(P.C.84)	FC	
37	121-138-19	Packing	1	LB(P.C.84)	NBR	*
38	141-005-18	Hex.Nut	2	M8	SUS304	
	173-001-35	<b>Packing O-Ring Set</b>	1Set	(Marked by *)		
8	121-000-84	Packing (Head Cover/M.Frame)	1		NBR	*
22	122-133-17	O-Ring (M.Frame/O.Casing)	1	G-110(109.4xd3.1)	NBR	*
25	121-246-11	Packing (Oil Plug)	1	d10.3xd16x2t	PE	*
27	121-000-20	Packing (O.Casing/P.Casing)	1	HS-4E	NR	*
37	121-138-19	Packing (Hose Coupling)	1	LB(P.C.84)	NBR	*
		Lubricant		Turbine Oil VG32 160ml		

PARTS LIST		SEWER & WASTEWATER PUMPS				9/14/2016
ITEM	PART No.	DESCRIPTION	QTY	SIZE	MATERIAL	NOTES

## EXPLODED VIEW

50UT2.4S-61

