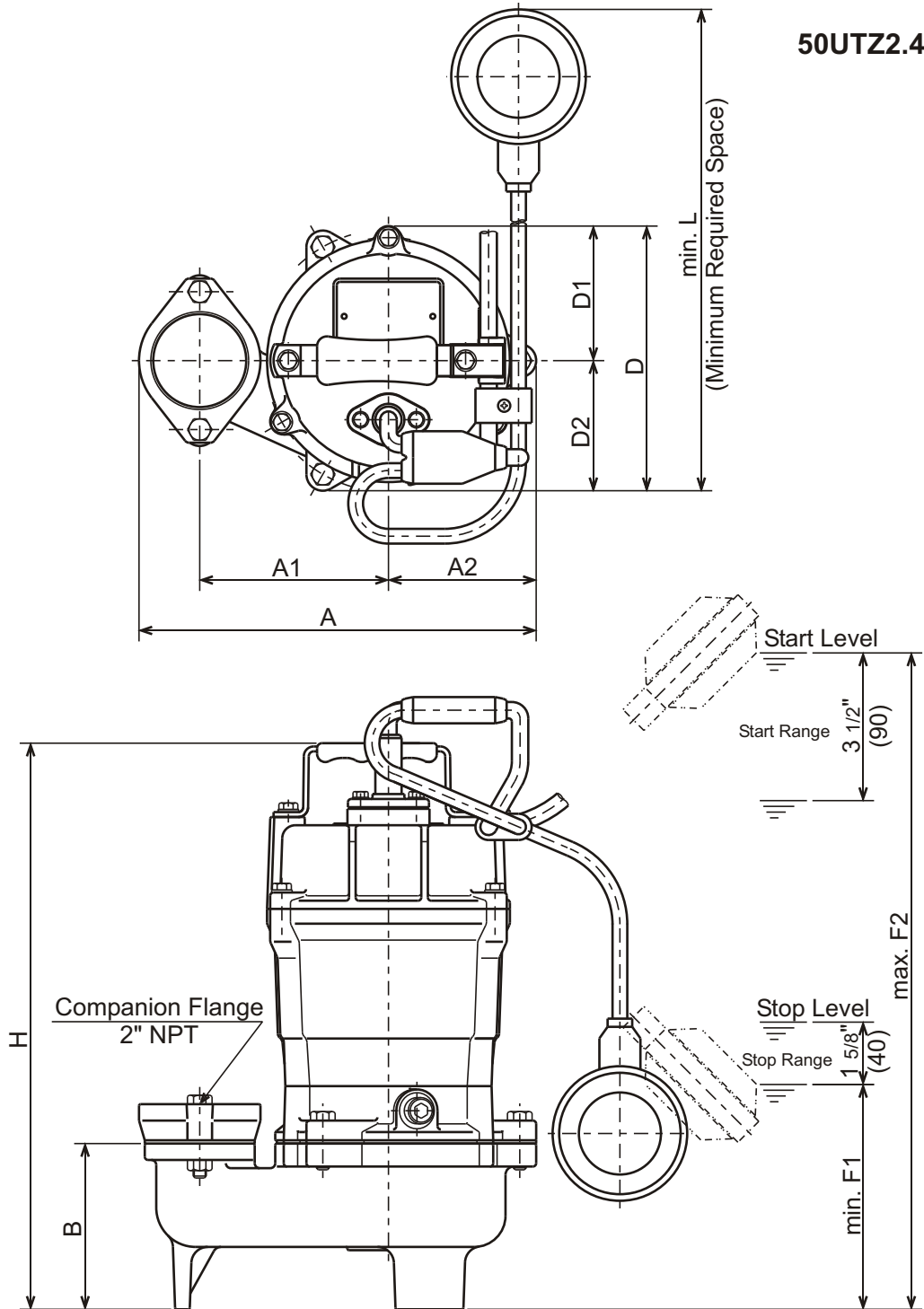




UT - SERIES
SUBMERSIBLE SEMI-VORTEX-SEWAGE PUMPS

DIMENSIONS

50UTZ2.4S-61



DIMENSIONS:USCS (Inch)

Model	HP	NOM. SIZE	Pump & Motor								Space min. L	Stop min. F1	Start max. F2	Wt. (lbs.)
			A	A1	A2	B	D	D1	D2	H				
50UTZ2.4S-61	1/2	2"	9 1/2	4 1/2	3 9/16	4	6 3/8	3 1/4	3 1/8	13 9/16	11 5/8	5 1/2	15 3/4	31

DIMENSIONS:METRIC (m m)

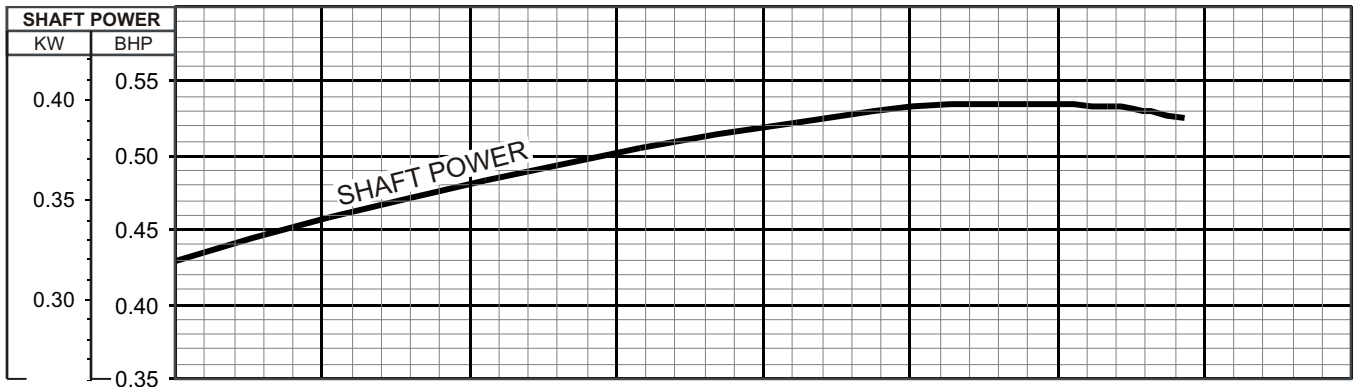
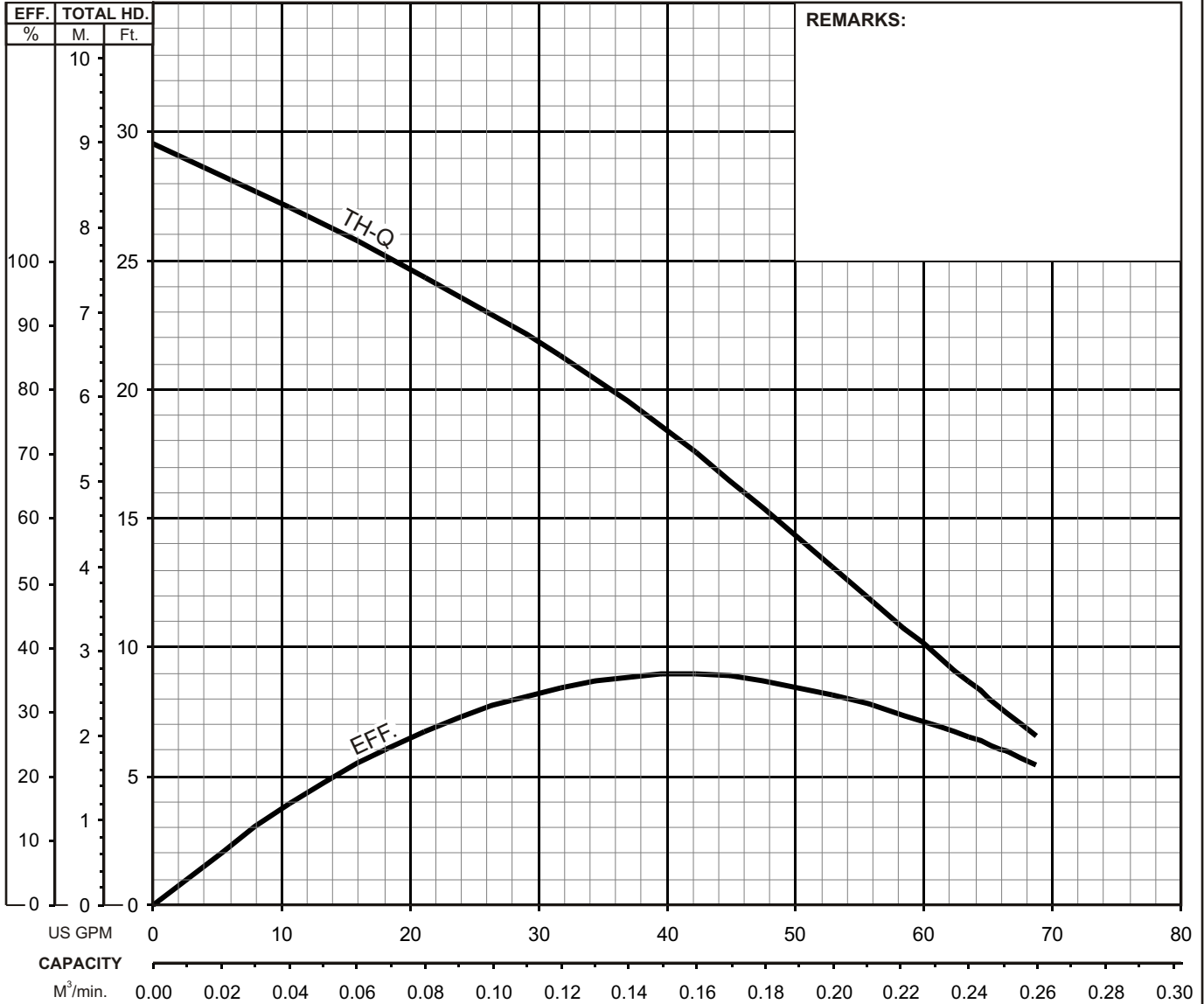
Model	kW	NOM. SIZE	Pump & Motor								Space min. L	Stop min. F1	Start max. F2	Wt. (kg)
			A	A1	A2	B	D	D1	D2	H				
50UTZ2.4S-61	0.40	50	242	115	90	101	161	82	79	345	293	137	400	14.0



UT - SERIES SUBMERSIBLE SEMI - VORTEX - SEWAGE PUMPS

PERFORMANCE CURVE

MODEL	BORE	HP	KW	RPM	SOLIDS DIA	LIQUID	SG.	VISCOSITY	TEMP.
50UT(Z)2.4S -61	2" / 50mm	0.54	0.40	3366	1.4" / 36mm	Water	1.0	1.123 cSt.	60°F
PUMP TYPE	PHASE	VOLTAGE		AMPERAGE		HZ	STARTING METHOD		INS. CLASS
SUBMERSIBLE SEMI - VORTEX - SEWAGE	Single	110/115/120 /220		5.8/5.7/5.6 /3.4		60	Capacitor-Start		E
CURVE No.	DATE	PHASE	VOLTAGE	AMPERAGE	HZ	STARTING METHOD		INS. CLASS	
-	-	-	-	-	-	-		-	

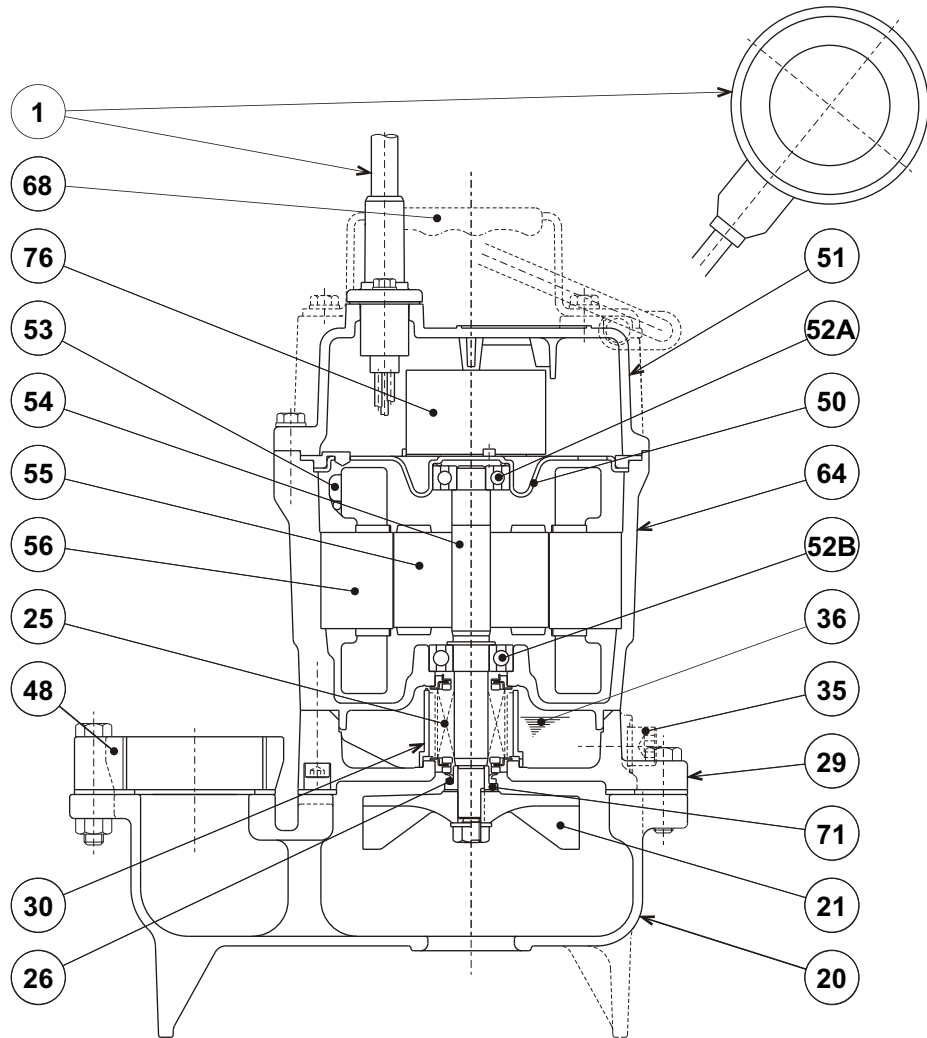




UT - SERIES
SUBMERSIBLE SEMI-VORTEX-SEWAGE PUMPS

SECTIONAL VIEW

50UTZ2.4S-61



ITEM#	DESCRIPTION	MAIN MATERIAL / NOTE	RELATED ASTM, AISI CODE	RELATED EN CODE	Q'TY
1	Power Cable w/ Float Set	PVC Sheath AWG16/3-20ft w/ PP Resin + Chloroprene Sheath Cable			1
20	Pump Casing	Cast Iron	A48M Class30B	EN 1561 GJL-200	1
21	Impeller	PPO Resin w/GF20			1
25	Mechanical Seal	Silicon Carbide / W-14VL			1
26	V-Ring	Nitrile Butadiene Rubber			1
29	Oil Casing	Cast Iron	A48M Class30B	EN 1561 GJL-200	1
30	Oil Lifter	PBT Resin			1
35	Oil Plug	Stainless Steel	S 30400	1.4301	1
36	Lubricant	Turbine Oil ISO VG32 or SAE10W-20			
48	Companion Flange	Cast Iron / NPT 2"	A48M Class30B	EN 1561 GJL-200	1
50	Motor Bracket	Steel (Electro-Galvanized)	A591	EN 10152	1
51	Motor Head Cover	Cast Iron	A48M Class30B	EN 1561 GJL-200	1
52A	Upper Bearing	#6201ZZC3			1
52B	Lower Bearing	#6202ZZC3			1
53	Motor Protector				1
54	Shaft	Stainless Steel	S 40300	1.4000	1
55	Rotor				1
56	Stator				1
64	Motor Housing	Cast Iron	A48M Class30B	EN 1561 GJL-200	1
68	Handle	Steel (Hot Rolled) + NR Rubber	A1011	EN 10111	1
71	Shaft Sleeve	Stainless Steel	S 30400	1.4301	1
76	Capacitor				1

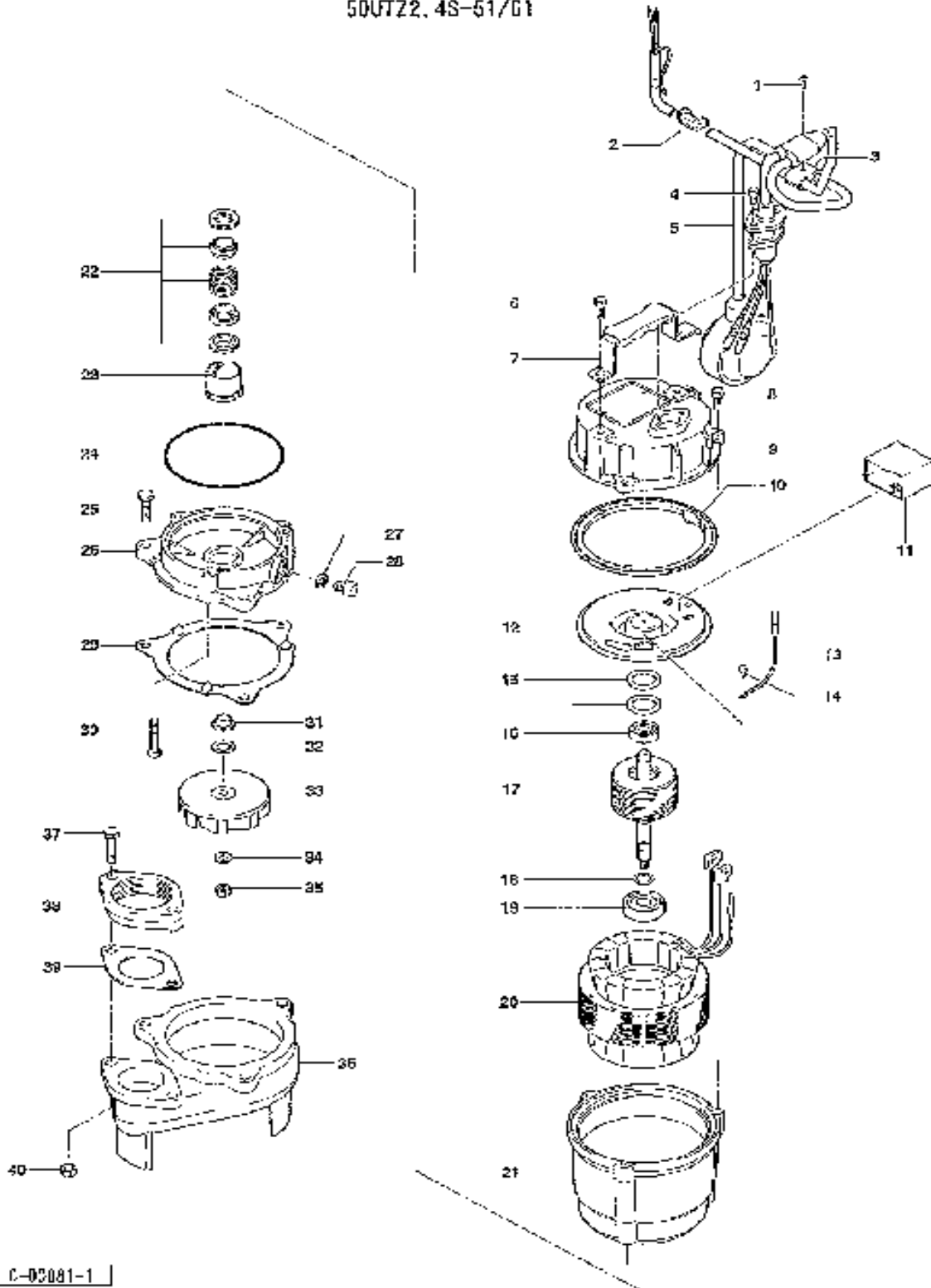
PARTS LIST		SEWAGE / WASTEWATER PUMP				9/21/2017
ITEM	PART No.	DESCRIPTION	QTY	SIZE	MATERIAL	NOTES
1	143-000-27	Tapping Screw	1	#4x16 (Pan)	SUS304	
2	010-163-16	Cable Clip Rubber	1	HS2.4S-52/62	NBR	
3	109-000-10	Float Support Bush	1	HS/LB-Z, "L" marked (Cable Dia. 10.1-10.5)	PP Resin	
4	140-427-17	Bolt	2	M5x15, w/ Washer	SUS304	
5	001-003-42	Power Cable w/ Float 20'-110V	1	LB-Z, AWG16/3 x 20', 316-Gland (w/ CSA3P)	STOW	
5	001-004-47	Power Cable w/ Float 20'-220V	1	LB-Z, AWG16/3 x 32', 316-Gland	STOW	
5	001-003-43	Power Cable w/ Float 32'-110V-Option	1	LB-Z, AWG16/3 x 32', 316-Gland (w/ CSA3P)	STOW	
5	001-003-33	Power Cable w/ Float 32'-220V-Option	1	LB-Z, AWG16/3 x 32', 316-Gland	VCT	
6	140-451-10	Bolt	2	M6x16, w/ Washer	SUS304	
7	068-272-18	Handle	1	HS2.4(S)-50/60	SPC+NR	
8	140-396-16	Bolt	3	M6x20, w/ Washer	SUS304	
9	051-000-28	Motor Head Cover	1	UT2.4(S)-51/61	FC200	
10	121-000-84	Gasket (H.Cover/M.Frame)	1	UT2.4(S)/2.75(S)-51/61, d120xD142x7.7t	NBR	*
11	076-000-34	Capacitor 110V-60HZ	1	SH-CAP, 32MFD-270VAC		
11	076-000-07	Capacitor 220V-60HZ	1	SH-CAP, 10MFD-500VAC		
11-1	009-289-15	Lead Wire (Capacitor/Power Cable)	1	AWG16 x 110L, Red	UL1015	
12	050-486-12	Motor Bracket	1	HS2.4S-52/62	SECD	
13	009-001-16	Grounding Wire	1	AWG18 x 132L, G/Y	UL1015	
14	143-203-14	Pan Screw	1	M4x5, w/ S.Washer	BSBM	
15	142-192-16	Wave Washer	1	#6201 (T=0.4)	SK-5	
16	052-191-13	Ball Bearing (Upper)	1	6201ZZC3 (MP-1 Grease)		
17	055-000-29	Rotor and Shaft	1	LB-480(A)-51/61, O.D. 64.5		
18	061-180-17	Bearing Collar	1	LB-480(A)-51/61	SS400	
19	052-192-14	Ball Bearing (Lower)	1	6202ZZC3 (MP-1 Grease)		
20	056-004-04	Stator 110V-60HZ	1	UT2.4S-51/61 (110V), 110/120-60), I.D. 65, w/		
20	056-004-05	Stator 220V-60HZ	1	UT2.4S-51/61 (200/220V-50/60), I.D. 65, w/		
20-1	000-000-53	Motor Protector	1	17AM032A5-4		
20-1	000-000-53	Motor Protector	1	17AM032E5-4		
21	064-000-71	Motor Frame	1	UT2.4(S)-51/61	FC200	
22	025-291-10	Mechanical Seal	1	W-14VL	SiC+CCBN	
23	030-000-09	Oil Lifter	1	W-14VL, for LSP	PBT Resin	
24	122-133-17	O-Ring (M.Frame/O.Casing)	1	G-110	NBR	*
25	140-056-11	Bolt	3	M8x30	SUS304	
26	029-000-58	Oil Casing	1	HS2.4(S)-52/62, High Gap	FC200	
27	121-246-11	Gasket (Oil Plug)	1	d10.3xD16x2t	PE-sheet	*
28	035-124-12	Oil Plug	1	M10x15 (Socket Bolt, J=8)	SUS304	
29	121-000-20	Gasket (O.Casing/P.Casing)	1	HS2.4S-52/62	NR	*
30	140-256-13	Socket Bolt	3	M6x35	SUS304	

PARTS LIST		SEWAGE / WASTEWATER PUMP				9/21/2017
ITEM	PART No.	DESCRIPTION	QTY	SIZE	MATERIAL	NOTES
31-1	122-441-11	V-Ring	1	VR-14	NBR	
31	071-292-14	Shaft Sleeve	1	LB3-250/480	SUS304	
32	142-354-18	Conical Spring Washer	1	d11.2xD22.5x0.8t	SUS304	
33	021G2629	Impeller 60Hz	1	4-PU/PN/TM-60Hz	PPO+GF20	
33	021G2821	Impeller 50Hz (OPTION)	1	8-PUT/PNT/TMT-60Hz	PPO+GF20	50Hz OPTION
34	142-143-12	Washer	1	M8	SUS304	
35	141-005-18	Nut	1	M8	SUS304	
36	020-001-85	Pump Casing	1	UT2.4(S)/2.75(S)-51/61	FC200	
37	140-059-14	Bolt	2	M8x45	SUS304	
38	048-179-11	Companion Flange 2" NPT	1	NPT-2" (P.C.84), SB-400	FC200	
39	121-138-19	Gasket (Companion Flange)	1	LB (P.C.84)	NBR	*
40	141-005-18	Nut	2	M8	SUS304	
	173-001-35	Gasket O-Ring Set	1set	(*)		
10	121-000-84	Gasket (H.Cover/M.Frame)	1	UT2.4(S)/2.75(S)-51/61, d120xD142x7.7t	NBR	*
24	122-133-17	O-Ring (M.Frame/O.Casing)	1	G-110	NBR	*
27	121-246-11	Gasket (Oil Plug)	1	d10.3xD16x2t	PE-sheet	*
29	121-000-20	Gasket (O.Casing/P.Casing)	1	HS2.4S-52/62	NR	*
39	121-138-19	Gasket (Companion Flange)	1	LB (P.C.84)	NBR	*
		Lubricant		Turbine Oil#32 160 mL (5.4 floz)	(SAE 10W-20)	

PARTS LIST		SEWAGE / WASTEWATER PUMP				9/21/2017
ITEM	PART No.	DESCRIPTION	QTY	SIZE	MATERIAL	NOTES

EXPLODED VIEW

50UTZ2.4S-61/01



Item C-03081-1